
S 630

PIALLA SPESSORE
THICKNESSING PLANER
RABOTEUSE
DICKENHOBELMASCHINE
REGRUESADORA

CATALOGO DELLE PARTI DI RICAMBIO
SPARE PARTS CATALOGUE
CATALOGUE DE PIECES DETACHEES
ERSATZTEILKATALOG
CATALOGO REPUESTOS



PREMESSA

Il presente manuale è stato preparato dalla SCM esclusivamente per l'uso da parte dei propri clienti garantendo che esso costituisce, alla data di edizione la documentazione più aggiornata relativa all'uso del prodotto. L'uso del presente manuale avviene sotto la completa responsabilità dell'utente.

Nessuna ulteriore garanzia viene pertanto concessa dalla SCM per eventuali imperfezioni, incompletezze e/o difficoltà operative, restando espressamente esclusa ogni responsabilità sua per danni diretti o indiretti comunque derivanti dall'uso di tale documentazione.

SCM si riserva il diritto di apportare modifiche al prodotto descritto in questo manuale in qualsiasi momento e senza preavviso.

Tutti i diritti di riproduzione sono riservati alla SCM RIMINI

INTRODUCTION SCM has prepared this handbook solely for the use of its customers, guaranteeing that as of the date of issue it constitutes the most up-to date documentation concerning the use of the product.

This handbook is used under the sole responsibility of the user.

SCM thus grants no further guarantee with regard to any imperfections, omissions and/or operating difficulties, and any liability on its side for direct or indirect damage deriving in any way from the use of the documentation is explicitly excluded.

SCM reserves the right to make modifications to the product described in this handbook at any moment, without notice.

All rights reserved by SCM RIMINI

INTRODUCTION

C'est exclusivement à l'intention de ses clients que SCM a préparé ce manuel. Notre Société vous assure qu'à la date de sa publication, il représente la documentation la plus récemment mise à jour pour l'utilisation du produit.

L'utilisateur est le seul responsable de l'emploi correct de ce manuel.

Il reste entendu que SCM n'accordera aucune garantie complémentaire couvrant toute imperfection, donnée incomplète et/ou difficulté opérationnelle.

SCM décline toute responsabilité relative aux dommages éventuels, directs ou indirects, susceptibles de dériver de l'utilisation de ce manuel.

SCM se réserve le droit de modifier le produit décrit dans ce manuel, à tout moment et sans préavis.

Tous droits réservés à la SCM RIMINI

VORWORT

Fa. SCM hat vorliegendes Handbuch nur für ihre Kunden ausgearbeitet und gewährleistet, daß diese Auflage auf den letzten Stand gebracht wurde.

Die Anwendung dieses Handbuches erfolgt unter der vollen Verantwortung des Gebrauchers.

Fa. SCM leistet daher keine weitere Garantie für etwa Mangelhaften, Fehlerhaften und/oder schwierigen Betrieb, und lehnt jede Haftung für direkte oder indirekte, auf jeden Fall vom Gebrauch dieser Unterlagen herrührende Schäden ausdrücklich ab.

Fa. SCM behält sich das Recht vor, das beschriebene Produkt jederzeit und ohne Vorbescheid abzuändern.

Alle Nachdruckrechte sind der SCM RIMINI

PREMISA

El presente manual ha sido preparado por SCM, exclusivamente para ser usado por sus propios clientes, garantizando que éste constituye, a la fecha de la edición, la documentación más actualizada referente al uso del producto.

El uso del presente manual se realizada bajo la completa responsabilidad del Usuario.

Por lo tanto no se concede ninguna garantía adicional por parte de SCM por eventuales imperfecciones, por estar incompleto y/o por dificultades operativas, quedando excluidas expresamente cualquier tipo de responsabilidad de ésta por daños directos, o indirectos, o que de cualquier modo deriven por el uso de esta documentación.

SCM se reserva el derecho de aportar modificaciones al producto descrito en el presente manual en cualquier momento y sin previo aviso.

SCM Rimini se reserva todos los derechos de reproducción.

© Copyright 1993 by SCM / SCMI RIMINI

Printed in Italy



PREMESSA
INTRODUCTION - INTRODUCTION
VORWORT - PREMISA



Codice/Code	Descr./Besch./Denom.	Codice/Code	Descr./Besch./Denom.	Codice/Code	Descr./Besch./Denom.
390-0101-0	BASAMENTO FRAME BÂTI STANDER BANGKADA				
390-0102-0	COPERTURA GUARD CAPOT ABBECKUNG PROTECCION INTEGRAL				
390-0201-0	PIANI TABLES TABLES TISCH MESAS				

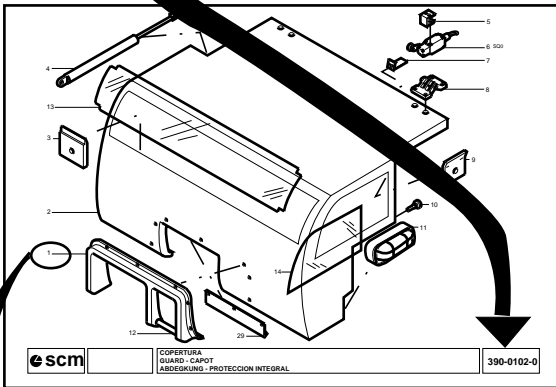
scm

INDICE DELLE TAVOLE
CONTENTS OF THE TABLES - INDEX DES TABLEUX
INHALT DER TABELLEN - INDICE DE LAS TABLAS

1

1

NELL'INDICE ANAGRAFICO APPAIONO LE TAVOLE IN CUI E' SUDDIVISO IL CATALOGO RICAMBI
THE ALPHABETIC CONTENTS SHOWS THE TABLES OF THE CATALOGUE
L'INDEX ALPHABETIQUE INDIQUE LES TABLEUX DU CATALOGUE
DER ALPHABETISCHE INHALT ZEIGT DIE TABELLEN DES KATALOGES
EN EL INDICE ANAGRAFICO APARECEN LAS TABLAS EN LAS QUE SE SUBDIVIDE EL CATALOGO REPUESTOS



2

ANDATI ALLA TAVOLA DESIDERATA SI CERCA NELLA PARTE GRAFICA IL PARTICOLARE
IN THE GRAPHIC PART OF THE DESIRED TABLE SEEK THE DETAIL
DANS LA PARTIE GRAPHIQUE DU TABLEAU DESIRE CHERCHER LA PIECE
DEN ERSATZTEIL IN DEM GRAPHIKTEIL DER GEWUENSCHTEN TABELLE SUCHEN
UBICADOS EN LA TABLA DESEADA SE BUSCA EL ELEMENTO EN LA PARTE GRAFICA

scm

COPERTURA
GUARD - CAPOT
ABBECKUNG - PROTECCION INTEGRAL

390-0102-0

P	CODICE	QTY	DENOMINAZIONE	DESCRIPTION	DESIGNATION	BEZEICHUNG	DENOMINATION
1	01743000R	1,00	XXXXXXXXXX	XXXXXXXXXX	XXXXXXXXXX	XXXXXXXXXX	XXXXXXXXXX
2	01600400C	1,00	XXXXXXXXXX	XXXXXXXXXX	XXXXXXXXXX	XXXXXXXXXX	XXXXXXXXXX
3	01900402B	2,00	XXXXXXXXXX	XXXXXXXXXX	XXXXXXXXXX	XXXXXXXXXX	XXXXXXXXXX
4	02500700D	3,00	XXXXXXXXXX	XXXXXXXXXX	XXXXXXXXXX	XXXXXXXXXX	XXXXXXXXXX
5	000613092F	1,00	XXXXXXXXXX	XXXXXXXXXX	XXXXXXXXXX	XXXXXXXXXX	XXXXXXXXXX

3

NELLA PARTE ANAGRAFICA DELLA TAVOLA, DAL NUMERO DI RIFERIMENTO DEL PARTICOLARE SI RISALE AL NUMERO DI CODICE.
NEI CATALOGHI DEDICATI A SINGOLE MACCHINE (NUMERO DI MATRICOLA IN COPERTINA) LA PARTE ANAGRAFICA RIPORTERA' SOLAMENTE I NUMERI DI CODICE DEI PARTICOLARI CHE COMPONGONO "QUELLA" MACCHINA
IN THE ALPHABETIC PART OF THE TABLE FROM THE REFERENCE NUMBER OF THE PART YOU GET THE CODE NUMBER.
IN THE CATALOGUES FOR PECULIAR MACHINE (SERIAL NUMBER ON THE COVER) THE ALPHABETIC PART GIVES ONLY THE CODE NUMBERS OF THE PARTS OF THAT MACHINE.

DANS LA PARTIE GRAPHIQUE DU TABLEAU DU NUMERO DE REFERENCE ON OBTIENT LE NUMERO DE CODE.
DANS LES CATALOGUES POUR MACHINES PARTICULIERES (NUMERO DE MATRICULE SUR LA COVERTURE) LA PARTIE ALPHABETIQUE DONNE SEULEMENT LES NUMEROS DE CODE DES PARTIES DE CETTE MACHINE.

IN DEM ALPHABETISCHEN TEIL DER TABELLE VON DER KENNZIFFER ERREICHT MAN DIE CODENUMMER.
BEI KATALOGEN FUER SONDERMASCHINEN (MASCHINENUMMER AUF DEM UMSCHLAG) GIBT DAS ALPHABETISCHE TEIL NUR DIE CODENUMMER DER TEILE JENER MASCHINE.

EN LA PARTE ANAGRAFICA DE LA TABLA, CON EL NUMERO DE REFERENCIA DEL ELEMENTO SE ENCUENTRA EL NUMERO DE CODIGO
EN LOS CATALOGOS DEDICADOS A MAQUINAS ESPECIALES (NUMERO DE MATRICULA EN LA TAPA) LA PARTE ANAGRAFICA TIENE SOLO LOS NUMEROS DE CODIGO DE LOS ELEMENTOS QUE COMPONEN "ESA" MAQUINA.

scm

COME CONSULTARE IL CATALOGO
HOW TO CONSULT THE CATALOGUE - COMMENT CONSULTER NOTRE CATALOGUE
WIE IM KATALOG NACHGESCHLAGEN WIRD - COMO CONSULTAR EL CATALOGO

scm

1 INDICARE SEMPRE:
ALWAYS SPECIFY:
SPECIFIER TOUJOURS:
IMMER ANGEBEN:
INDICAR SIEMPRE:

A -MODELLO
-MODEL
-MODELE
-MODELL
-MODELO

B -NUMERO DI MATRICOLA
-MACHINE NUMBER
-NUMERO DE MATRICULE
-MASCHINENUMMER
-NUMERO DE MATRICULA

C -TENSIONE DI ESERCIZIO
-FREQUENZA DI RETE
-RATED VOLTAGE
-MAINS FREQUENCY
-TENSION D'EXERCICE
-FREQUENCE DE RESEAU
-BETRIEBSSPANNUNG
-NETZFREQUENZ
-TENSION DE TRABAJO
-FRECUENCIA DE RED

MOD. kg ~

N.

V Hz

2 PER OGNI PARTE RICHIESTA INDICARE:
FOR EVERY PART REQUIRED SPECIFY:
POUR TOUTE PARTIE DEMANDEE SPECIFIER:
FUER JEDES ERSATZTEIL ANGEBEN
EN CADA PEDIDO INDICAR

390-0401-0

P	CODICE	Q.TY	DENOMINAZIONE
1	0327430300B	1.00	XXXXXXXXXXXXXX
2	0316036400C	1.00	XXXXXXXXXXXXXX
3	0339030402B	2.00	XXXXXXXXXXXXXX
4	0325638703D	3.00	XXXXXXXXXXXXXX
5	0000613092F	1.00	XXXXXXXXXXXXXX

RIFERIMENTO
REFERENCE
REFERENCE
KENNZIFFER
REFERENCIA

NUMERO DI CODICE
CODE NUMBER
N. DE REFERENCE
BESTELNUMMER
NUMERO DE CODIGO

QUANTITA'
QUANTITY
QUANTITE
ANZAHL
CANTIDAD

TAVOLA
TABLE
TABELLE
TABLA

4 INDIRIZZARE A:
SEND TO:
ADRESSER A:
EINZUREICHEN BEI:
DIRIGIR A:

SCM
Servizio Ricambi
via Casale, 450
47827 VILLA VERUCCHIO ITALY
Tel. 0541 - 674111

3 -PER QUEI COMPONENTI ELETTRICI OD ELETTROMECCANICI CHE NON FIGURANO NEL CATALOGO, E' NECESSARIO INDICARE OGNI DATO REPERIBILE SULLA TARGHETTA O STAMPIGLIATO SU DI ESSI.

-FOR ELECTRIC AND ELECTROMECHANICAL COMPONENTS NOT LISTED, YOU SHOULD SUPPLY INFORMATION FOR EVERY ITEM ON THE PLATE OR PRINTED ON THE COMPONENT.

-POUR LES COMPOSANTS ELECTRIQUES ET ELECTROMECHANIQUES NON REPORTES, FOURNIR TOUTES LES DONNEES INDIQUEES SUR LA PLAQUE OU SUR LE COMPOSANT MEME.

-FUER DIE NICHT AUFGEFUHRTEN ELEKTRISCHEN UND ELEKTRO-MECHANISCHEN BESTANDTEILE SIND ALLE AUF DEM SCHILD ODER AUF DEN TEILEN SELBST VERMERKTEN DATEN ANZUGEBEN.

-PARA LOS COMPONENTES ELECTRICOS O ELECTROMECHANICOS QUE NO SE ENCUENTRAN EN EL CATALOGO, ES NECESARIO INDICAR TODOS LOS DATOS QUE SE MUESTRAN EN LA TARJETA O IMPRESOS EN LOS MISMOS.

SUL RETRO MODULO PER RICHIESTA RICAMBI, DA FOTOCOPIARE, COMPILARE E INVIARE AL CONCESSIONARIO / OVERLEAF YOU FIND THE FORM TO PHOTOCOPY, FILL AND SEND TO THE DEALER
AU VERSO MODULE A PHOTOCOPIER, REMPLIR ET ENVOYER AU CONCESSIONAIRE / AUF DER RUECKSEITE FINDET MAN DAS FORMBLATT, DAS SIE PHOTOCOPIEREN, EINFUELLEN UND AN DEN HAENDLER SENDEN MUESSEN
EN LA PARTE DE ATRAS DEL MODULO PARA PEDIDOS DE REPUESTOS, FOTOCOPIAR Y ENVIAR AL CONCESIONARIO AU VERSO MODULE



COME ORDINARE LE PARTI DI RICAMBIO
HOW TO ORDER SPARE PARTS - COMMENT COMMANDER LES PIECES DETACHEES
WIE ERSATZTEILE BESTELT WERDEN - COMO ORDENAR LOS REPUESTOS



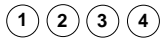
SIMBOLI

SIMBOLS

SYMBOLES

SYMBOLE

SIMBOLOS



RICHIAMO GENERICO (NOTA)
GENERAL REFERENCE MARK (NOTE)
RENOVI GENERAL (NOTE)
ALLGEMEINER VERWEIS (ANMERKUNG)
LLAMADO GENERAL (NOTA)



ASSIEME, GRUPPO, COMPLESSIVO
ASSEMBLY
ENSEMBLE, GROUPE
SATZ
CONJUNTO, GRUPO



ASSIEME, GRUPPO, COMPLESSIVO
ASSEMBLY
ENSEMBLE, GROUPE
SATZ
CONJUNTO, GRUPO



ASSIEME DEI COMPONENTI RAFFIGURATI NELLA TAVOLA
SETS OF COMPONENTS SHOWN ON THE TABLE
ENSEMBLE DES COMPONENTS REPRESENTES SUR LA TABLEAU
GESAMTHEIT DER IN DER TABELLE DARGESTELLTEN BESTANDTEILE
CONJUNTO DE COMPONENTES EN TABLA



ASSE GEOMETRICO
GEOMETRIC AXIS
AXE GEOMETRIQUE
GEOMETRISCHE ACHSE
EJE GEOMETRICO



SPECIFICO PER LA NAZIONE INDICATA
SPECIFIC FOR THIS COUNTRY
SPECIFIQUE POUR LA NATION INDIQUEE
AUF DIESES LAND BEZOGEN
ESPECIFICO PARA LA NACIÓN INDICADA



ESCLUSIONE PER LA NAZIONE INDICATA
NOT FOR THIS COUNTRY
EXCLUSION POUR LA NATION INDIQUEE
NICHT FUER DIESES LAND
EXCLUSIÓN PARA LA NACIÓN INDICADA



TAGLIARE SU MISURA DAL ROTOLO
CUT FROM ROLL AS REQUIRED
COUPER SUR MESURE DE LA BOBINE
MASSGERECHT VON DER ROLLE ABSCHNEIDEN
CORTAR A MEDIDA DE BOBINA



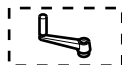
COPPIA
PAIR
COUPLE
PAAR
PAR



TERNA
TERN
GROUPE DE TROIS
DREIERGRUPPE
TERNA



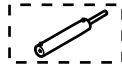
QUATERNA
SET OF 4 PIECES
JEU DE QUATRE
VIERERSATZ
CONJUNTOS DE 4 ELEMENTOS



SPOSTAMENTO MANUALE
MANUAL DISPLACEMENT
DEPLACEMENT MANUEL
HANDVERSTELLUNG
DESPLAZAMIENTO MANUAL



SPOSTAMENTO MOTORIZZATO
POWERED DISPLACEMENT
DEPLACEMENT MOTORISEE
VERSTELLUNG MITTELS MOTORS
DESPLAZAMIENTO MOTORIZADO



SPOSTAMENTO PNEUMATICO
PNEUMATICALLY-CONTROLLED DISPLACEMENT
DEPLACEMENT A COMMANDE PNEUMATIQUE
PNEUMATISCHE VERSTELLUNG
DESPLAZAMIENTO NEUMATICO

**- ABBREVIAZIONI - SEGNI CONVENZIONALI
- ABBREVIATIONS - CONVENTIONAL MARKS
- ABBREVIATIONS - SIGNES CONVENTIONELS
- ABKUERZUNGEN - UEBLICHE ZEICHEN
- ABBREVIACIONES - SEÑALES CONVENCIONALES**



PARTICOLARE DESTRO RAPPRESENTATO NELLA TAVOLA
RIGHT PART SHOWN IN THE TABLE
PARTIE DROITE REPRESENTE SUR LA PLANCHE
RECHTES AUF DER TAFEL DARGESTELLTES TEIL
PARTE DERECHA REPRESENTADA EN TABLA



PARTICOLARE SINISTRO RAPPRESENTATO NELLA TAVOLA
LEFT PART SHOWN IN THE TABLE
PARTIE GAUCHE REPRESENTE SUR LA PLANCHE
LINKES AUF DER TAFEL DARGESTELLTES TEIL
PARTE IZQUIERDA REPRESENTADA EN TABLA



PARTICOLARE DESTRO NON RAPPRESENTATO
RIGHT PART NOT SHOWN
PARTIE DROITE PAS REPRESENTE
RECHTES NICHT-DARGESTELLTES TEIL
PARTE DERECHA NO REPRESENTADA



PARTICOLARE SINISTRO NON RAPPRESENTATO
LEFT PART NOT SHOWN
PARTIE GAUCHE PAS REPRESENTE
LINKES NICHT-DARGESTELLTES TEIL
PARTE IZQUIERDA NO REPRESENTADA



GRADUAZIONE IN MILLIMETRI
MILLIMETER SCALE
ECHELLE EN MILLIMETRES
MILLIMETER-MASSKALA
ESCALA EN MILIMETROS



GRADUAZIONE IN POLLICI
INCHES SCALE
ECHELLE EN POUCES
SOLL-MASSKAL
ESCALA EN PULGADAS



DIAMETRO
DIAMETER
DIAMETRE
DURCHMESSER
DIAMETRO



SPESSORE
THICKNESS
EPAISSEUR
DICKE
ESPESOR

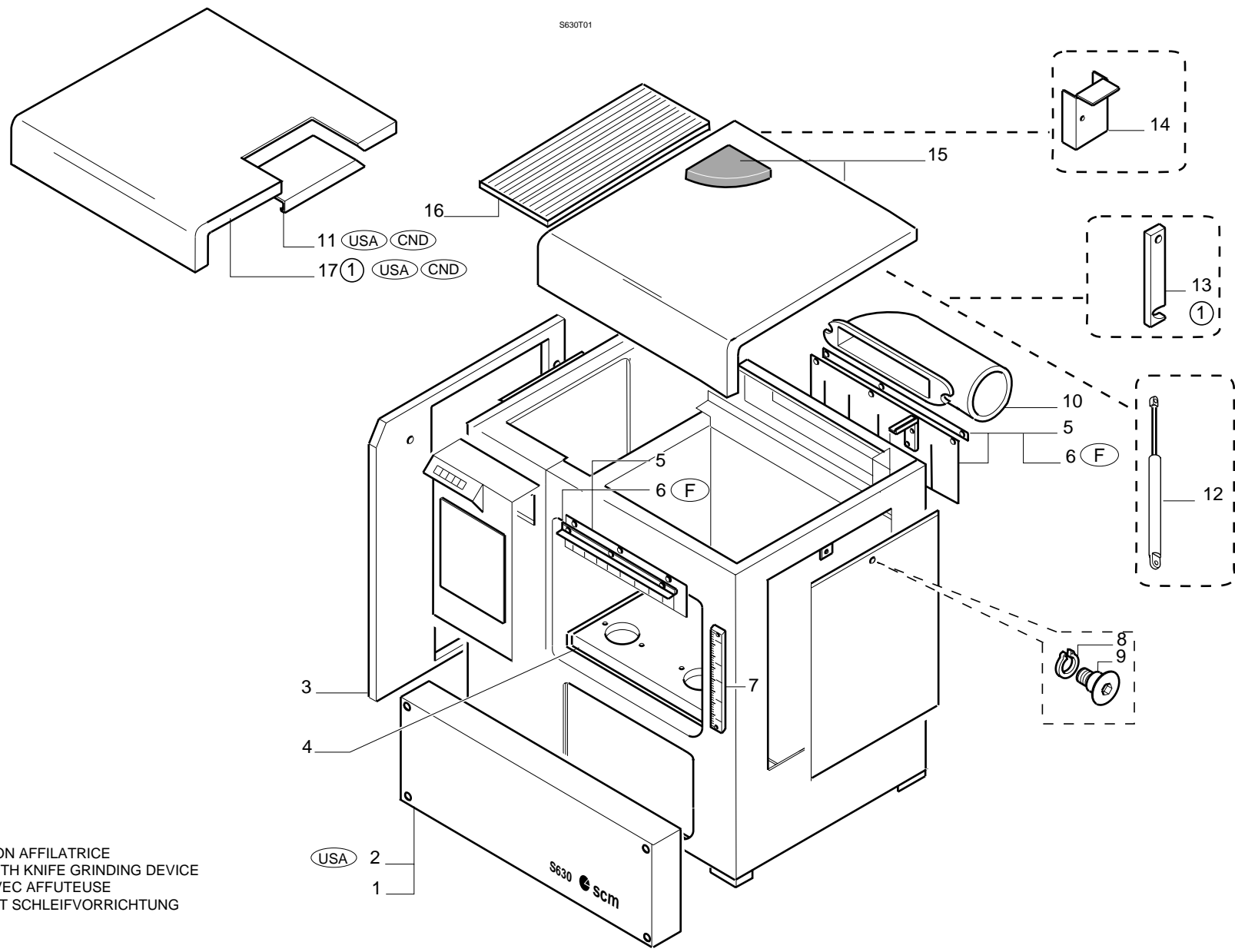


LUNGHEZZA
LENGTH
LONGUEUR
LANGE
LONGITUD

N.B.
— DOVE NON SPECIFICATO LE MISURE SI INTENDONO ESPRESSE IN MILLIMETRI
— WHERE NOT SPECIFIED, MEASURES ARE GIVEN IN MILLIMETERS
— SANS SPECIFICATION, LES DIMENSIONS S'ENTENDENT EN MILLIMETRES
— WENN NICHT ANGEZEIGT, SIND DIE MASSE IN MILLIMETERN ZU VERSTEHEN
— DONDE NO SE ESPECIFICAN LAS MEDIDAS SE ENTIENDE EN MILIMETROS

Codice/Code	Descr./Beschr./Denom.	Codice/Code	Descr./Beschr./Denom.	Codice/Code	Descr./Beschr./Denom.
350-0101-0	BASAMENTO FRAME BATI STAENDER BANCADA	350-0601-0	AFFILATRICE KNIFE GRINDING DEVICE AFFUTEUSE SCHLEIFVORRICHTUNG	350-0905-0	LEGENDA
350-0201-0	ALBERO PIALLA E TRASMISSIONE CUTTERBLOCK AND DRIVE ARBRE PORTE-COUTEAUX ET TRANSMISSION HOBELWELLE UND ANTRIEB EJE CEPILLO Y TRANSMISION	350-0701-0	ACCESSORI A CORREDO STANDARD ACCESSORIES ACCESSOIRES STANDARD ZUBEHOER ACCESORIOS DE EQUIPAMIENTO		
350-0202-0	RULLI D'AVANZAMENTO FEEDING ROLLERS ROULEAUX D'ENTRAINEMENT VORSCHUBROLLEN RODILLOS DE AVANCE	350-0801-0	TARGHETTE PLATES PLAQUETTES SCHILDER TARJETAS		
350-0301-0	RIDUTTORE E VARIATORE CONTINUO GEAR BOX AND STEPLESS SPEED CHANGE GEAR REDUCTEUR ET VARIATEUR CONTINU GETRIEBE UND STUFENLOSES GETRIEBE	350-0901-0	MOSTRINE PLAQUES PLATES PLÄTTCHEN TARJETAS		
350-0302-0	REGOLAZIONE PNEUMATICA DELLA PRESSIONE PNEUMATIC PRESSURE ADJUSTEMENT REGULATION PNEUMATIQUE DE LA PRESSION PNEUMATISCHE DRUCKREGULIERUNG REGULACIÓN NEUMÁTICA DE LA PRESIÓN	350-0902-0	COMPONENTI ELETTRICI ELECTRICAL COMPONENTS COMPOSANTS ELECTRIQUES ELEKTROTEILE COMPONENTES ELECTRICOS		
350-0401-0	PIANO SPESSORE THICKNESSING TABLE TABLE RABOTEUSE DICKENTISCH MESA REGRUESADORA	350-0903-0	COMPONENTI ELETTRICI ELECTRICAL COMPONENTS COMPOSANTS ELECTRIQUES ELEKTROTEILE COMPONENTES ELECTRICOS		
350-0501-0	REGOLAZIONE VERTICALE PIANO E VITI SOLL. HEIGHT ADJUSTMENT OF WORK TABLE AND LIFT REGLAGE VERTICAL TABLE ET VIS DE SOULEVE HOEHENVERSTELLUNG DES TISCHES UND HUBSCH REGUL. VERTICAL MESA Y TORNILLO DE ELEV.	350-0904-0	COMPONENTI ELETTRICI ELECTRICAL COMPONENTS COMPOSANTS ELECTRIQUES ELEKTROTEILE COMPONENTES ELECTRICOS		

N	P	C	CODICE	Q.TY	DENOMINAZIONE	DESCRIPTION	DESIGNATION	BEZEICHNUNG	DENOMINACION
1			1035012600C	1.00	CARTER	COVER	CARTER	DECKEL	CARTER
2			1035012601E	1.00	CARTER	COVER	CARTER	DECKEL	CARTER
3			0535011000H	1.00	CARTER	COVER	CARTER	DECKEL	CARTER
4			1035011800F	1.00	LAMIERA	PLATE	TOLE	BLECH	CHAPA
5			1035012900L	1.00	PROTEZIONE TRASPARENTE	GUARD	PROTECTION	ABDECKUNG	PROTECCION TRANSPARENTE
6			1035012901B	1.00	PROTEZIONE TRASPARENTE	GUARD	PROTECTION	ABDECKUNG	PROTECCION TRANSPARENTE
7			0335021500G	1.00	ASTA	ROD	TIGE	STANGE	ASTA
8			0335010500D	1.00	PERNO	PIN	PIVOT	BOLZEN	PERNO
9			0000644513H	1.00	ANELLO SEEGER	CIRCLIP	CIRCLIP	SEEGERRING	SEEGER
10			0334912000C	1.00	CUFFIA	HOOD	HOTTE	HAUBE	CAMPANA
11			0535013500B	1.00	CARTER	COVER	CARTER	DECKEL	CARTER
12			0000617877G	1.00	MOLLA	SPRING	RESSORT	FEDER	RESORTE
13			0325810801A	1.00	ASTA	ROD	TIGE	STANGE	ASTA
14			0335014100L	1.00	STAFFA	BRACKET	BRIDE	BUEGEL	ABRAZADERA
15			1035012500A	1.00	CARTER	COVER	CARTER	DECKEL	CARTER
16			0535011105B	1.00	LAMIERA	PLATE	TOLE	BLECH	CHAPA
17			1035013200E	1.00	CARTER	COVER	CARTER	DECKEL	CARTER



① CON AFFILATRICE
 WITH KNIFE GRINDING DEVICE
 AVEC AFFUTEUSE
 MIT SCHLEIFVORRICHTUNG

USA 2
 1



S 630

BASAMENTO - (December '93, p.28,01,2004)
 FRAME - BATI
 STAENDER - BANCADA

350-0101-0



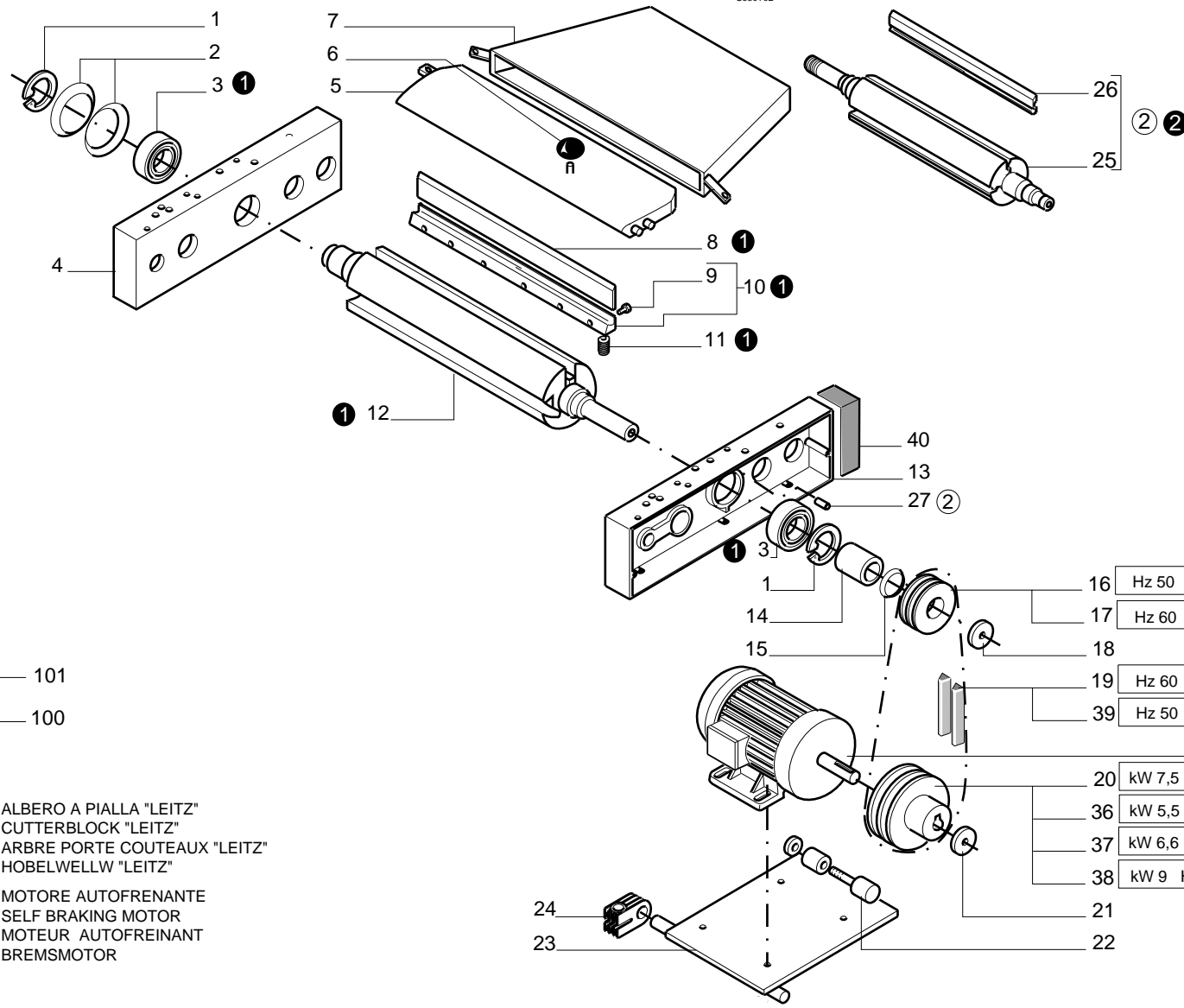
S 630

ALBERO PIALLA E TRASMISSIONE - (December '93, p.28,01,2004)
CUTTERBLOCK AND DRIVE - ARBRE PORTE-COUTEAUX ET TRANSMISSION
HOBELWELLE UND ANTRIEB - EJE CEPILLO Y TRANSMISION

350-0201-0

N	P	C	CODICE	Q.TY	DENOMINAZIONE	DESCRIPTION	DESIGNATION	BEZEICHNUNG	DENOMINACION
1			0000644077C	2.00	ANELLO SEEGER	CIRCLIP	CIRCLIP	SEEGERRING	SEEGER
2			0000617835H	2.00	MOLLA TAZZA	SPRING	RESSORT	FEDER	RESORTE
3			0000606057D	2.00	CUSCINETTO	BEARING	ROULEMENT	LAGER	COJINETE
4			0335030100L	1.00	SUPPORTO	SUPPORTO	SUPPORT	STUETZE	SOPORTE
5			0525832300H	1.00	CORPO	BODY	CORPS	KOERPER	CUERPO
6			0303010300B	1.00	POMOLO	BALL GRIP	POIGNEE	KUGELGRIFF	POMO
7			0535011700D	1.00	CONVOGLIATRUCIOLI	CHIPS CONVEYOR	CONVOYEUR COPEAUX	SPAENELEITBLECH	CONDUCTOR VIRUTA
8			0000605078G	1.00	COLTELLO	KNIFE	COUTEAU	MESSER	CUCHILLO
9			0306330299D	28.00	VITE	SCREW	VIS	SCHRAUBE	TORNILLO
10			2925841101H	1.00	ASS. LARDONI	GIBS UNIT	ENSEMBLE CONTRE-FERS	KLEMMLEISTENEINHEIT	CONJ. HOJAS
11			0302130203L	8.00	MOLLA	SPRING	RESSORT	FEDER	RESORTE
12			0535032000D	1.00	ALBERO	SHAFT	ARBRE	WELLE	EJE
13			0335030000G	1.00	SUPPORTO	SUPPORT	SUPPORT	STUETZE	SOPORTE
14			0335032500A	1.00	DISTANZIALE	SPACER	ENTRETOISE	DISTANZSTUECK	DISTANCIADOR
15			0000628020B	1.00	BLOCCAGGIO	LOCKING DEVICE	BLOCAGE	SPERRE	BLOQUEO
16			0335032400H	1.00	PULEGGIA	PULLEY	POULIE	RIEMENSCHIEBE	POLEA
17			0335032600C	1.00	PULEGGIA	PULLEY	POULIE	RIEMENSCHIEBE	POLEA
18			0000305308C	1.00	ROSETTA	WASHER	RONDELLE	SCHEIBE	ARANDELA
19			0000603351D	1.00	CINGHIA	BELT	COURROIE	RIEMEN	CORREA
20			0325830400D	1.00	PULEGGIA	PULLEY	POULIE	RIEMENSCHIEBE	POLEA
21			0000305310F	1.00	ROSETTA	WASHER	RONDELLE	SCHEIBE	ARANDELA
22			0335012100G	1.00	PERNO	PIN	PIVOT	BOLZEN	PERNO
23			0535012000L	1.00	BANDIERA MOTORE	SUPPORT	SUPPORT	MOTOR WIPPE	BANDERA
24			0315312300C	2.00	MORSETTO	CLAMP	ETAU	KLEMMELEMENT	MORDAZA
25			0735032020A	1.00	ALBERO	SHAFT	ARBRE	WELLE	EJE
26			0000605293C	2.00	COLTELLO	KNIFE	COUTEAU	MESSER	CUCHILLO
27			0000640202D	0.60	TUBO	HOSE	TUYAU	SCHLAUCH	TUBO
28			0001314152D	1.00	MOTORE TRIF.	3.PH MOTOR	3 PH. MOTEUR	3-PH MOTOR	MOT. TRIFAS
29			0001315125H	1.00	MOTORE TRIF.	3.PH MOTOR	3 PH. MOTEUR	3-DREIPHASENMOTOR	MOT. TRIFAS
30			0001314187H	1.00	MOTORE TRIF.	3.PH MOTOR	3 PH. MOTEUR	3-DREIPHASENMOTOR	MOT. TRIFAS
31			0001315115G	1.00	MOTORE TRIF.	3.PH MOTOR	3 PH. MOTEUR	3-DREIPHASENMOTOR	MOT. TRIFAS
32			0001331267L	1.00	MOTORE TRIF. FRENO C.C.	3-PH. MOTOR D.C. BRAKE	MOTEUR 3-PH . FREIN C.C	3-PH. MOTOR G.S. BREMSE	MOT. TRIFAS. FR. C.C.
33			0001331273B	1.00	MOTORE TRIF. FRENO C.C.	3-PH. MOTOR D.C. BRAKE	MOTEUR 3-PH . FREIN C.C	3-PH. MOTOR G.S. BREMSE	MOT. TRIFAS. FR. C.C.
34			0001331247G	1.00	MOTORE TRIF. FRENO C.C.	3-PH. MOTOR D.C. BRAKE	MOTEUR 3-PH . FREIN C.C	3-PH. MOTOR G.S. BREMSE	MOT. TRIFAS. FR. C.C.
35			0001331253L	1.00	MOTORE TRIF. FRENO C.C.	3-PH. MOTOR D.C. BRAKE	MOTEUR 3-PH . FREIN C.C	3-PH. MOTOR G.S. BREMSE	MOT. TRIFAS. FR. C.C.
36			0325830401F	1.00	PULEGGIA	PULLEY	POULIE	RIEMENSCHIEBE	POLEA
37			0335033000A	1.00	PULEGGIA	PULLEY	POULIE	RIEMENSCHIEBE	POLEA
38			0335033001C	1.00	PULEGGIA	PULLEY	POULIE	RIEMENSCHIEBE	POLEA
39			0000603388C	1.00	CINGHIA	BELT	COURROIE	RIEMEN	CORREA
40			0335015000H	4.00	SPUGNA	SPONGE	EPONGE	SCHWAMM	SPUGNA

S630T02



- ② — 101
- ① — 100

② ALBERO A PIALLA "LEITZ"
 CUTTERBLOCK "LEITZ"
 ARBRE PORTE COUTEAUX "LEITZ"
 HOBELWELLW "LEITZ"

① MOTORE AUTOFRENANTE
 SELF BRAKING MOTOR
 MOTEUR AUTOFREINANT
 BREMSMOTOR

28	kW 5,5 V 220 Hz 50
41	kW 5,5 V 380 Hz 50
42	kW 5,5 V 415 Hz 50
29	kW 6,6 V 230/460 Hz 60
43	kW 6,6 V 600 Hz 60
44	kW 6,6 V 230/460 Hz 60
45	kW 6,6 V 380 Hz 60
30	kW 7,5 V 220 Hz 50
46	kW 7,5 V 380 Hz 50
47	kW 7,5 V 415 Hz 50
48	kW 7,5 V 440 Hz 50
31	kW 9 V 600 Hz 60
49	kW 9 V 230/460 Hz 60
50	kW 9 V 220 Hz 60
32	kW 5,5 V 220 Hz 50
51	kW 5,5 V 380 Hz 50
52	kW 5,5 V 415 Hz 50
53	kW 5,5 V 440 Hz 50
33	kW 6,6 V 230/460 Hz 60
54	kW 6,6 V 600 Hz 60
55	kW 6,6 V 380 Hz 60
56	kW 6,6 V 220 Hz 60
34	kW 7,5 V 220 Hz 50
57	kW 7,5 V 380 Hz 50
58	kW 7,5 V 415 Hz 50
59	kW 7,5 V 440 Hz 50
35	kW 9 V 230/460 Hz 60
60	kW 9 V 600 Hz 60
61	kW 9 V 220 Hz 60



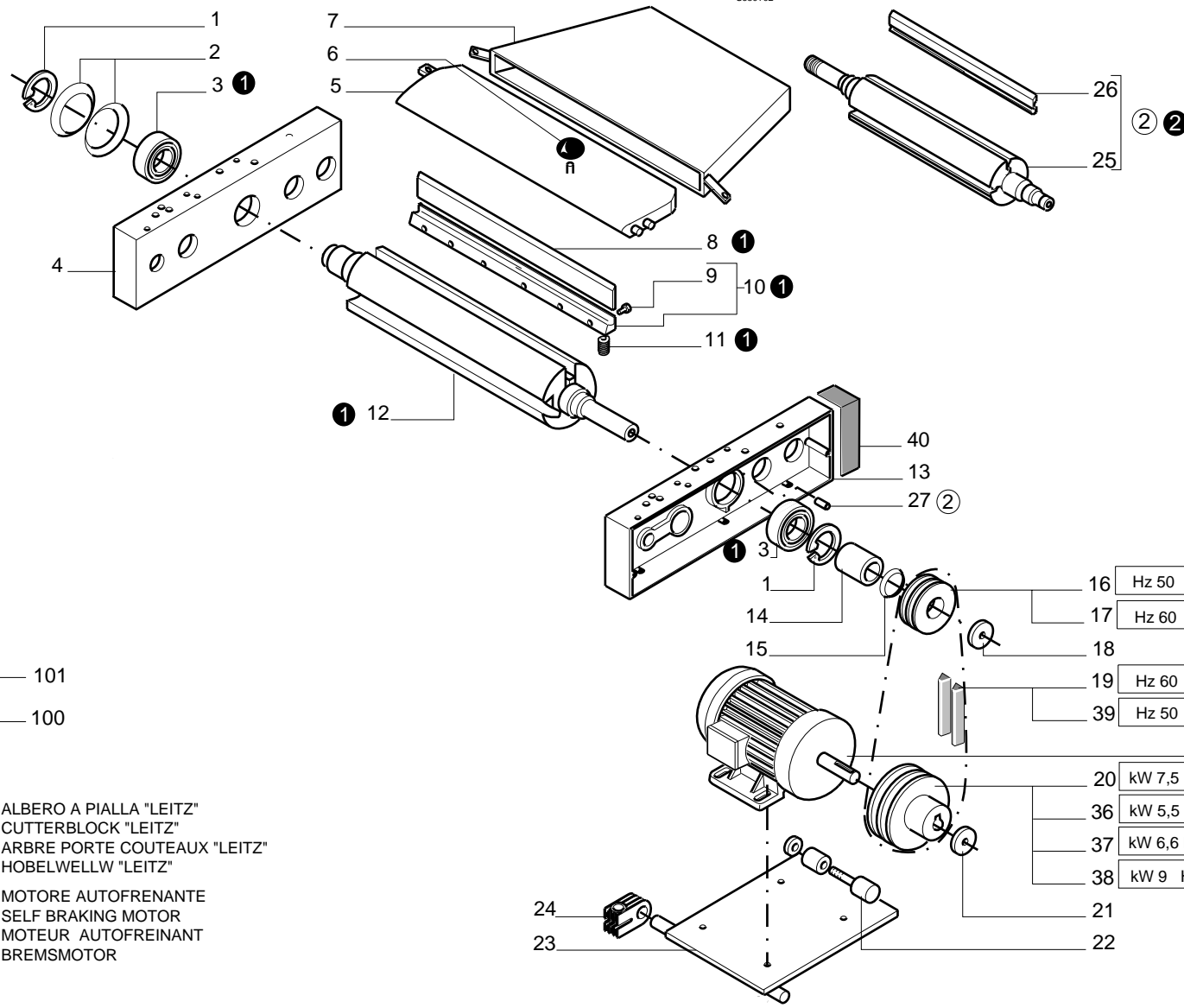
S 630

ALBERO PIALLA E TRASMISSIONE - (December '93, p.28,01,2004)
 CUTTERBLOCK AND DRIVE - ARBRE PORTE-COUTEAUX ET TRANSMISSION
 HOBELWELLE UND ANTRIEB - EJE CEPILLO Y TRANSMISION

350-0201-0

N	P	C	CODICE	Q.TY	DENOMINAZIONE	DESCRIPTION	DESIGNATION	BEZEICHNUNG	DENOMINACION
41			0001314159L	1.00	MOTORE TRIF.	3.PH MOTOR	3 PH. MOTEUR	3-PH MOTOR	MOT. TRIFAS
42			0001314162E	1.00	MOTORE TRIF.	3.PH MOTOR	3 PH. MOTEUR	3-PH MOTOR	MOT. TRIFAS
43			0001315128E	1.00	MOTORE TRIF.	3.PH. MOTOR	3 PH. MOTEUR	3-PH. MOTOR	MOT. TRIFAS
44			0001315132C	1.00	MOTORE TRIF.	3.PH. MOTOR	3 PH. MOTEUR	3-PH MOTOR	MOT. TRIFAS
45			0001315135L	1.00	MOTORE TRIF.	3.PH MOTOR	3 PH. MOTEUR	3-PH MOTOR	MOT. TRIFAS
46			0001314188A	1.00	MOTORE TRIF.	3.PH MOTOR	3 PH. MOTEUR	3-DREIPHASENMOTOR	MOT. TRIFAS
47			0001314189C	1.00	MOTORE TRIF.	3.PH MOTOR	3 PH. MOTEUR	3-DREIPHASENMOTOR	MOT. TRIFAS
48			0001314190D	1.00	MOTORE TRIF.	3.PH MOTOR	3 PH. MOTEUR	3-DREIPHASENMOTOR	MOT. TRIFAS
49			0001315154L	1.00	MOTORE TRIF.	3.PH MOTOR	3 PH. MOTEUR	3-DREIPHASENMOTOR	MOT. TRIFAS
50			0001334198F	1.00	MOTORE TRIF.	3.PH MOTOR	3 PH. MOTEUR	3-DREIPHASENMOTOR	MOT. TRIFAS
51			0001331268B	1.00	MOTORE TRIF. FRENO C.C.	3-PH. MOTOR D.C. BRAKE	MOTEUR 3-PH . FREIN C.C	3-PH. MOTOR G.S. BREMSE	MOT. TRIFAS. FR. C.C.
52			0001331269D	1.00	MOTORE TRIF. FRENO C.C.	3-PH. MOTOR D.C. BRAKE	MOTEUR 3-PH . FREIN C.C	3-PH. MOTOR G.S. BREMSE	MOT. TRIFAS. FR. C.C.
53			0001331270E	1.00	MOTORE TRIF. FRENO C.C.	3-PH. MOTOR D.C. BRAKE	MOTEUR 3-PH . FREIN C.C	3-PH. MOTOR G.S. BREMSE	MOT. TRIFAS. FR. C.C.
54			0001331274D	1.00	MOTORE TRIF. FRENO C.C.	3-PH. MOTOR D.C. BRAKE	MOTEUR 3-PH . FREIN C.C	3-PH. MOTOR G.S. BREMSE	MOT. TRIFAS. FR. C.C.
55			0001331275F	1.00	MOTORE TRIF. FRENO C.C.	3-PH. MOTOR D.C. BRAKE	MOTEUR 3-PH . FREIN C.C	3-PH. MOTOR G.S. BREMSE	MOT. TRIFAS. FR. C.C.
56			0001331276H	1.00	MOTORE TRIF. FRENO C.C.	3-PH. MOTOR D.C. BRAKE	MOTEUR 3-PH . FREIN C.C	3-PH. MOTOR G.S. BREMSE	MOT. TRIFAS. FR. C.C.
57			0001331248L	1.00	MOTORE TRIF. FRENO C.C.	3-PH. MOTOR D.C. BRAKE	MOTEUR 3-PH . FREIN C.C	3-PH. MOTOR G.S. BREMSE	MOT. TRIFAS. FR. C.C.
58			0001331249B	1.00	MOTORE TRIF. FRENO C.C.	3-PH. MOTOR D.C. BRAKE	MOTEUR 3-PH . FREIN C.C	3-PH. MOTOR G.S. BREMSE	MOT. TRIFAS. FR. C.C.
59			0001331250C	1.00	MOTORE TRIF. FRENO C.C.	3-PH. MOTOR D.C. BRAKE	MOTEUR 3-PH . FREIN C.C	3-PH. MOTOR G.S. BREMSE	MOT. TRIFAS. FR. C.C.
60			0001331254B	1.00	MOTORE TRIF. FRENO C.C.	3-PH. MOTOR D.C. BRAKE	MOTEUR 3-PH . FREIN C.C	3-PH. MOTOR G.S. BREMSE	MOT. TRIFAS. FR. C.C.
61			0001331255D	1.00	MOTORE TRIF. FRENO C.C.	3-PH. MOTOR D.C. BRAKE	MOTEUR 3-PH . FREIN C.C	3-PH. MOTOR G.S. BREMSE	MOT. TRIFAS. FR. C.C.
100			1035030100D	1.00	ASS. ALBERO PIALLA STD				
101			1035032020F	1.00	ASS.ALBERO PIALLA "LEITZ"				

S630T02



- ② — 101
- ① — 100

② ALBERO A PIALLA "LEITZ"
 CUTTERBLOCK "LEITZ"
 ARBRE PORTE COUTEAUX "LEITZ"
 HOBELWELLW "LEITZ"

① MOTORE AUTOFRENANTE
 SELF BRAKING MOTOR
 MOTEUR AUTOFREINANT
 BREMSMOTOR

28	kW 5,5 V 220 Hz 50
41	kW 5,5 V 380 Hz 50
42	kW 5,5 V 415 Hz 50
29	kW 6,6 V 230/460 Hz 60
43	kW 6,6 V 600 Hz 60
44	kW 6,6 V 230/460 Hz 60
45	kW 6,6 V 380 Hz 60
30	kW 7,5 V 220 Hz 50
46	kW 7,5 V 380 Hz 50
47	kW 7,5 V 415 Hz 50
48	kW 7,5 V 440 Hz 50
31	kW 9 V 600 Hz 60
49	kW 9 V 230/460 Hz 60
50	kW 9 V 220 Hz 60
32	kW 5,5 V 220 Hz 50
51	kW 5,5 V 380 Hz 50
52	kW 5,5 V 415 Hz 50
53	kW 5,5 V 440 Hz 50
33	kW 6,6 V 230/460 Hz 60
54	kW 6,6 V 600 Hz 60
55	kW 6,6 V 380 Hz 60
56	kW 6,6 V 220 Hz 60
34	kW 7,5 V 220 Hz 50
57	kW 7,5 V 380 Hz 50
58	kW 7,5 V 415 Hz 50
59	kW 7,5 V 440 Hz 50
35	kW 9 V 230/460 Hz 60
60	kW 9 V 600 Hz 60
61	kW 9 V 220 Hz 60

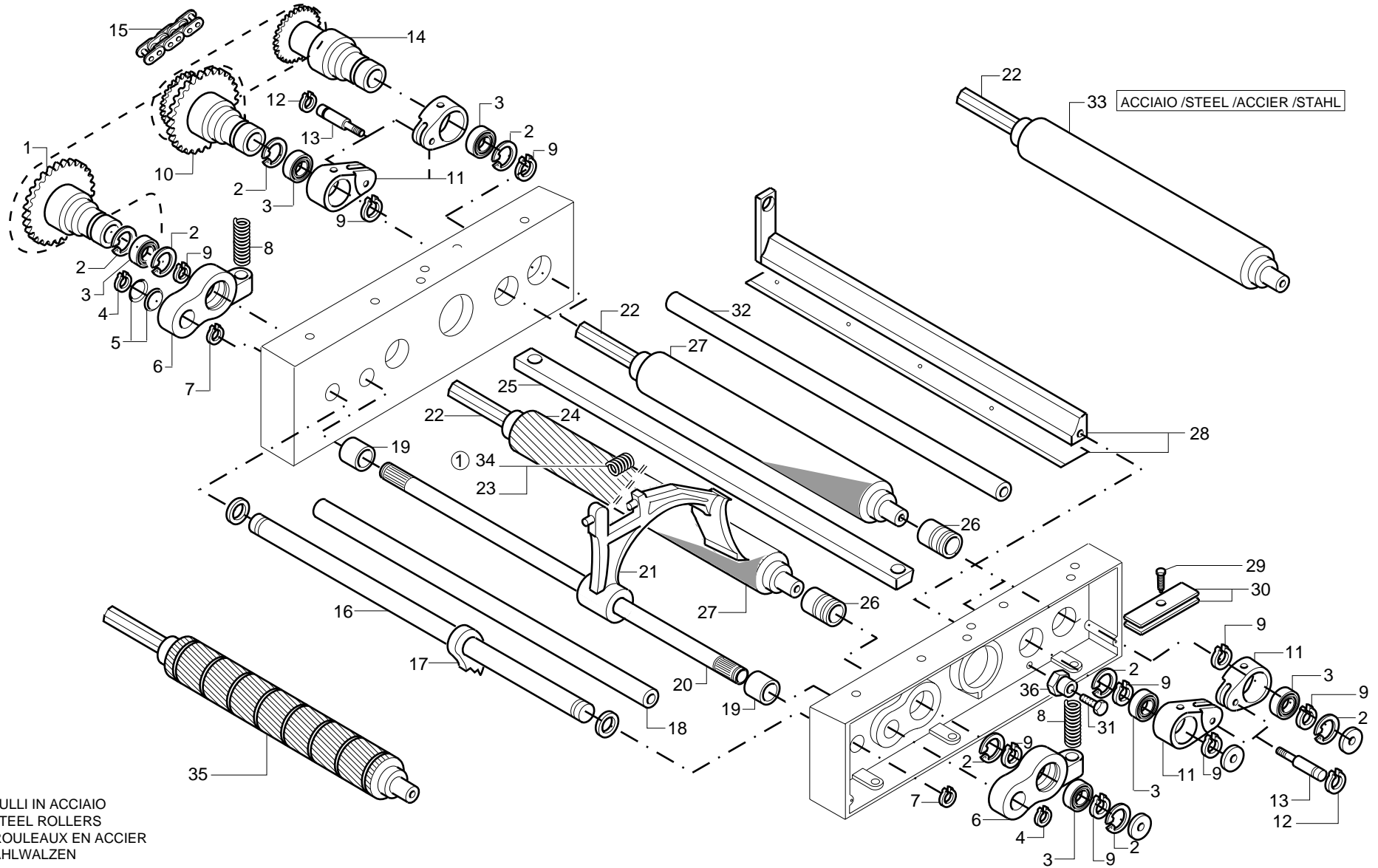


S 630

ALBERO PIALLA E TRASMISSIONE - (December '93, p.28,01,2004)
 CUTTERBLOCK AND DRIVE - ARBRE PORTE-COUTEAUX ET TRANSMISSION
 HOBELWELLE UND ANTRIEB - EJE CEPILLO Y TRANSMISION

350-0201-0

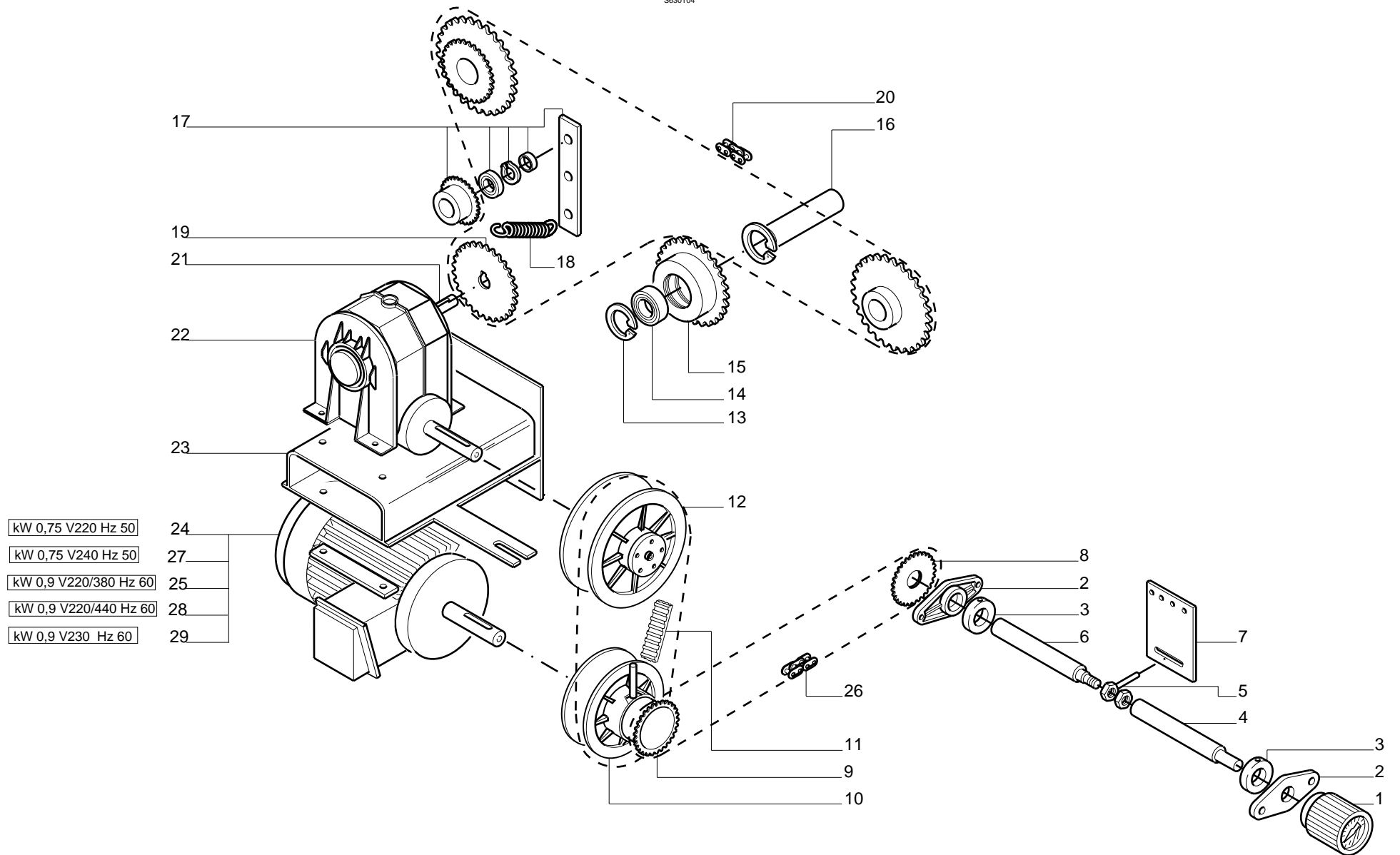
N	P	C	CODICE	Q.TY	DENOMINAZIONE	DESCRIPTION	DESIGNATION	BEZEICHNUNG	DENOMINACION
1			0535030700G	1.00	PIGNONE	SPROCKET	PIGNON	RITZEL	PIÑON
2			0000644068D	8.00	ANELLO SEEGER	CIRCLIP	CIRCLIP	SEEGERRING	SEEGER
3			0000606355F	6.00	CUSCINETTO	BEARING	ROULEMENT	LAGER	COJINETE
4			0000644278L	2.00	ANELLO SEEGER	CIRCLIP	CIRCLIP	SEEGERRING	SEEGER
5			0000617747B	2.00	MOLLA TAZZA	SPRING	RESSORT	TELLERFEDER	RESORTE
6			0335030500H	2.00	BIELLA	CONNECTING ROD	BIELLE	PLEUELSTANGE	BIELA
7			0000644273H	2.00	ANELLO SEEGER	CIRCLIP	CIRCLIP	SEEGERRING	SEEGER
8			0335031000H	2.00	MOLLA	SPRING	RESSORT	FEDER	RESORTE
9			0000644288A	9.00	ANELLO ELASTICO	SPRING RING	BAGUE POUR GAINE	FEDERRING	ANILLO ELASTICO
10			0535030800L	1.00	PIGNONE	SPROCKET	PIGNON	RITZEL	PIÑON
11			0335030600A	4.00	BIELLA	CONNECTING ROD	BIELLE	PLEUELSTANGE	BIELA
12			0000644268H	2.00	ANELLO SEEGER	CIRCLIP	CIRCLIP	SEEGERRING	SEEGER
13			0335031700D	2.00	PERNO	PIN	PIVOT	BOLZEN	PERNO
14			0535030900B	1.00	PIGNONE	SPROCKET	PIGNON	RITZEL	PIÑON
15			0000602180L	1.00	CATENA	CHAIN	CHAINE	KETTE	CADENA
16			0335031400G	1.00	PERNO	PIN	PIVOT	BOLZEN	PERNO
17			0324632600F	34.00	MARTELLETTO	ANTIKICKBACK FINGER	CLIQUET	RUECKSCHLAGFINGER	MARTINETE
18			0335033400L	1.00	BARRA	BAR	BARRE	STANGE	BARRA
19			0335033200E	2.00	DISTANZIALE	SPACER	ENTRETOISE	DISTANZSTUECK	DISTANCIADOR
20			0335031500L	1.00	PERNO	PIN	PIVOT	BOLZEN	PERNO
21			0335031200C	13.00	PRESSATORE	PRESSER	PRESSEUR	DRUCKELEMEN	PRENSADOR
22			0335031100A	3.00	BARRA	BAR	BARRE	STANGE	BARRA
23			0313758520E	13.00	MOLLA	SPRING	RESSORT	FEDER	RESORTE
24			0535033100G	1.00	RULLO	ROLLER	ROULEAU	WALZE	RODILLO
25			0335031800F	1.00	BARRA	BAR	BARRE	STANGE	BARRA
26			0335031600B	3.00	DISTANZIALE	SPACER	ENTRETOISE	DISTANZSTUECK	DISTANCIADOR
27			0535031300L	2.00	RULLO	ROLLER	ROULEAU	WALZE	RODILLO
28			1035031900C	1.00	KIT PRESS.	PRESSER KIT	JEU PRESSEUR	KIT DRUCKELEMEN	KIT PRENS.
29			0335032300F	2.00	VITE	SCREW	VIS	SCHRAUBE	TORNILLO
30			0335032200D	4.00	BALESTRA	LEAF SPRING	RESSORT A LAME	BLATTFEDER	BALLESTA
31			0334931800D	2.00	VITE	SCREW	VIS	SCHRAUBE	TORNILLO
32			0335033500B	1.00	LIMITATORE	LIMITER	LIMITEUR	BEGRENZER	LIMITADOR
33			0535033300B	2.00	RULLO	ROLLER	ROULEAU	WALZE	RODILLO
34			0315433001E	13.00	MOLLA	SPRING	RESSORT	FEDER	RESORTE
35			2935066101A	1.00	RULLO	ROLLER	ROULEAU	WALZE	RODILLO
36			0334932500H	1.00	BOCCOLA	BUSHING	DOUILLE	BUCHSE	CASQUILLO



① CON RULLI IN ACCIAIO
WITH STEEL ROLLERS
AVEC ROULEAUX EN ACCIER
MITSTAHLWALZEN

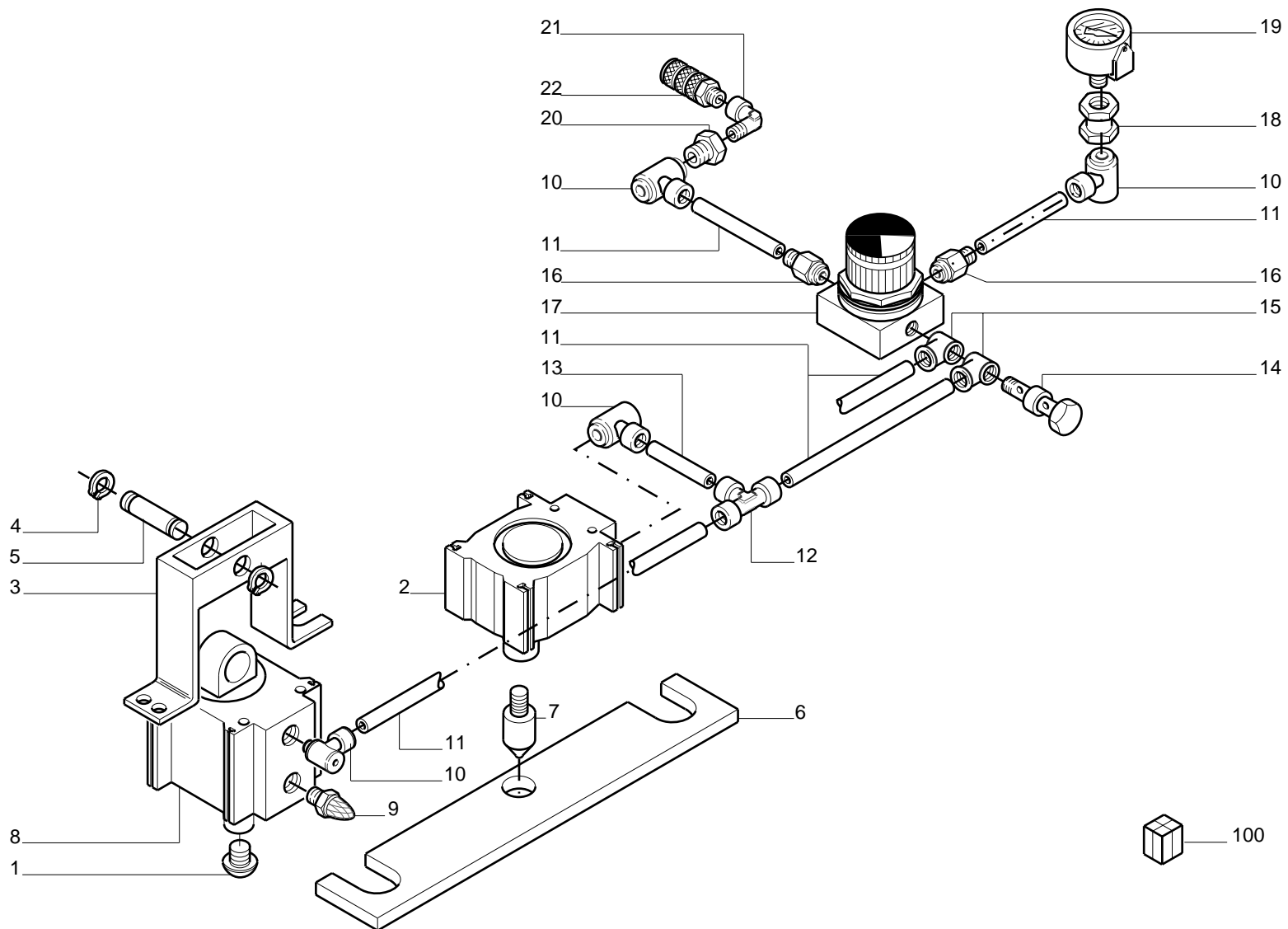
**S 630****RIDUTTORE E VARIATORE CONTINUO - (December '93, p.28,01,2004)**
GEAR BOX AND STEPLESS SPEED CHANGE GEAR - REDUCTEUR ET VARIATEUR CONTINUU
GETRIEBE UND STUFENLOSES GETRIEBE -**350-0301-0**

N	P	C	CODICE	Q.TY	DENOMINAZIONE	DESCRIPTION	DESIGNATION	BEZEICHNUNG	DENOMINACION
1			0735042000A	1.00	POMOLO	BALL GRIP	POIGNEE	KUGELGRIFF	POMO
2			0334940400F	2.00	FLANGIA	FLANGE	FLASQUE	FLANSCH	ANILLO
3			0335040500A	2.00	BOCCOLA	BUSHING	DOUILLE	BUCHSE	CASQUILLO
4			0335041100C	1.00	PERNO	PIN	PIVOT	BOLZEN	PERNO
5			0535041300B	1.00	INDICE	POINTER	INDICATEUR	ZEIGER	INDICE
6			0335041200E	1.00	PERNO	PIN	PIVOT	BOLZEN	PERNO
7			0335041000A	1.00	PIASTRA	PLATE	PLAQUE	PLATTE	PLANCHA
8			0335040600C	1.00	PIGNONE	SPROCKET	PIGNON	RITZEL	PIÑON
9			0000642651H	1.00	COMANDO	CONTROL	COMMANDE	STEUERUNG	MANDO
10			0000636018H	1.00	PULEGGIA	PULLEY	POULIE	RIEMENSCHLEIBE	POLEA
11			0000603501C	1.00	CINGHIA	BELT	COURROIE	RIEMEN	CORREA
12			0000636250L	1.00	PULEGGIA	PULLEY	POULIE	RIEMENSCHLEIBE	POLEA
13			0000644048B	2.00	ANELLO ELASTICO	SPRING RING	BAGUE POUR GAINÉ	FEDERRING	ANILLO ELASTICO
14			0000606239A	1.00	CUSCINETTO	BEARING	ROULEMENT	LAGER	COJINETE
15			0335021100H	1.00	PIGNONE	SPROCKET	PIGNON	RITZEL	PIÑON
16			0334923900F	1.00	PERNO	PIN	PIVOT	BOLZEN	PERNO
17			1035040700L	1.00	PIGNONE	SPROCKET	PIGNON	RITZEL	PIÑON
18			0323884909F	1.00	MOLLA	SPRING	RESSORT	FEDER	RESORTE
19			0335040800G	1.00	PIGNONE	SPROCKET	PIGNON	RITZEL	PIÑON
20			0000602178F	1.00	CATENA	CHAIN	CHAINE	KETTE	CADENA
21			0335040900L	1.00	PERNO	PIN	PIVOT	BOLZEN	PERNO
22			0000638740B	1.00	RIDUTTORE	REDUCING GEAR	REDUCTEUR	GETRIEBE	REDUCTOR
23			0535040100F	1.00	SUPPORTO	SUPPORT	SUPPORT	STUETZE	SOPORTE
24			0001318054A	1.00	MOTORE TRIF.	3.PH MOTOR	3 PH. MOTEUR	3-DREIPHASENMOTOR	MOT. TRIFAS
25			0001323079A	1.00	MOTORE TRIF.	3.PH MOTOR	3 PH. MOTEUR	3-DREIPHASENMOTOR	MOT. TRIFAS
26			0000602518H	1.00	CATENA	CHAIN	CHAINE	KETTE	CADENA
27			0001318058L	1.00	MOTORE	MOTOR	MOTEUR	MOTOR	MOTOR
28			0001323081D	1.00	MOTORE	MOTOR	MOTEUR	MOTOR	MOTOR
29			0001323083H	1.00	MOTORE	MOTOR	MOTEUR	MOTOR	MOTOR



N	P	C	CODICE	Q.TY	DENOMINAZIONE	DESCRIPTION	DESIGNATION	BEZEICHNUNG	DENOMINACION
1			0335034400A	2.00	PROLUNGA	EXTENSION	RALLONGE	VERLAENGERUNG	EXTENSION
2			0001501773H	2.00	CILINDRO PNEUMATICO	PNEUMATIC CYLINDER	CYLINDRE PNEUMATIQUE	PNEUMATIKZYLINDER	CILINDRO NEUMATICO
3			0535034000F	2.00	SUPPORTO	SUPPORT	SUPPORT	STUETZE	SOPORTE
4			0000644260A	4.00	ANELLO SEEGER	CIRCLIP	CIRCLIP	SEEGERRING	SEEGER
5			0335034200F	2.00	PERNO	PIN	PIVOT	BOLZEN	PERNO
6			0335034100D	2.00	PIASTRA	PLATE	PLAQUE	PLATTE	PLANCHA
7			0335034300H	2.00	PROLUNGA	EXTENSION	RALLONGE	VERLAENGERUNG	EXTENSION
8			0001501774A	2.00	CILINDRO PNEUMATICO	PNEUMATIC CYLINDER	CYLINDRE PNEUMATIQUE	PNEUMATIKZYLINDER	CILINDRO NEUMATICO
9			0001908055G	2.00	SILENZIATORE	SILENCER	SILENCIEUX	SCHALLDAEMPFER	SILENCIADOR
10			0001905110A	6.00	RACCORDO	FITTING	RACCORD	ANSCHLUSS	CONEXION
11			0000640136D	2.00	TUBO	HOSE	TUYAU	SCHLAUCH	TUBO
12			0001904525A	2.00	RACCORDO	FITTING	RACCORD	ANSCHLUSS	CONEXION
13			0001904930L	2.00	PROLUNGA	EXTENSION	RALLONGE	VERLAENGERUNG	EXTENSION
14			0001904959B	1.00	ASTA	ROD	TIGE	STANGE	ASTA
15			0001904963L	2.00	RACCORDO	FITTING	RACCORD	ANSCHLUSS	CONEXION
16			0001904160E	2.00	RACCORDO	FITTING	RACCORD	ANSCHLUSS	CONEXION
17			0001508846B	1.00	REGOLATORE	REGULATOR	REGULATEUR	REGLER	REGULADOR
18			0001907021D	1.00	MANICOTTO	SLEEVE	MANCHON	MUFFE	MANGUITO
19			0001505010D	1.00	MANOMETRO	PRESSURE GAUGE	MANOMETRE	MANOMETER	MANOMETRO
20			0001908005B	1.00	RIDUZIONE	REDUCTION	REDUCTION	REDUZIER STUECK	REDUCCION
21			0001906004G	1.00	RACCORDO	FITTING	RACCORD	ANSCHLUSS	CONEXION
22			0001902106L	1.00	RUBINETTO	COCK	ROBINET	HAHN	CANILLA
100			1035034000F	1.00	KIT REGOLAZIONE PNEUM.				

SE30T05



S 630

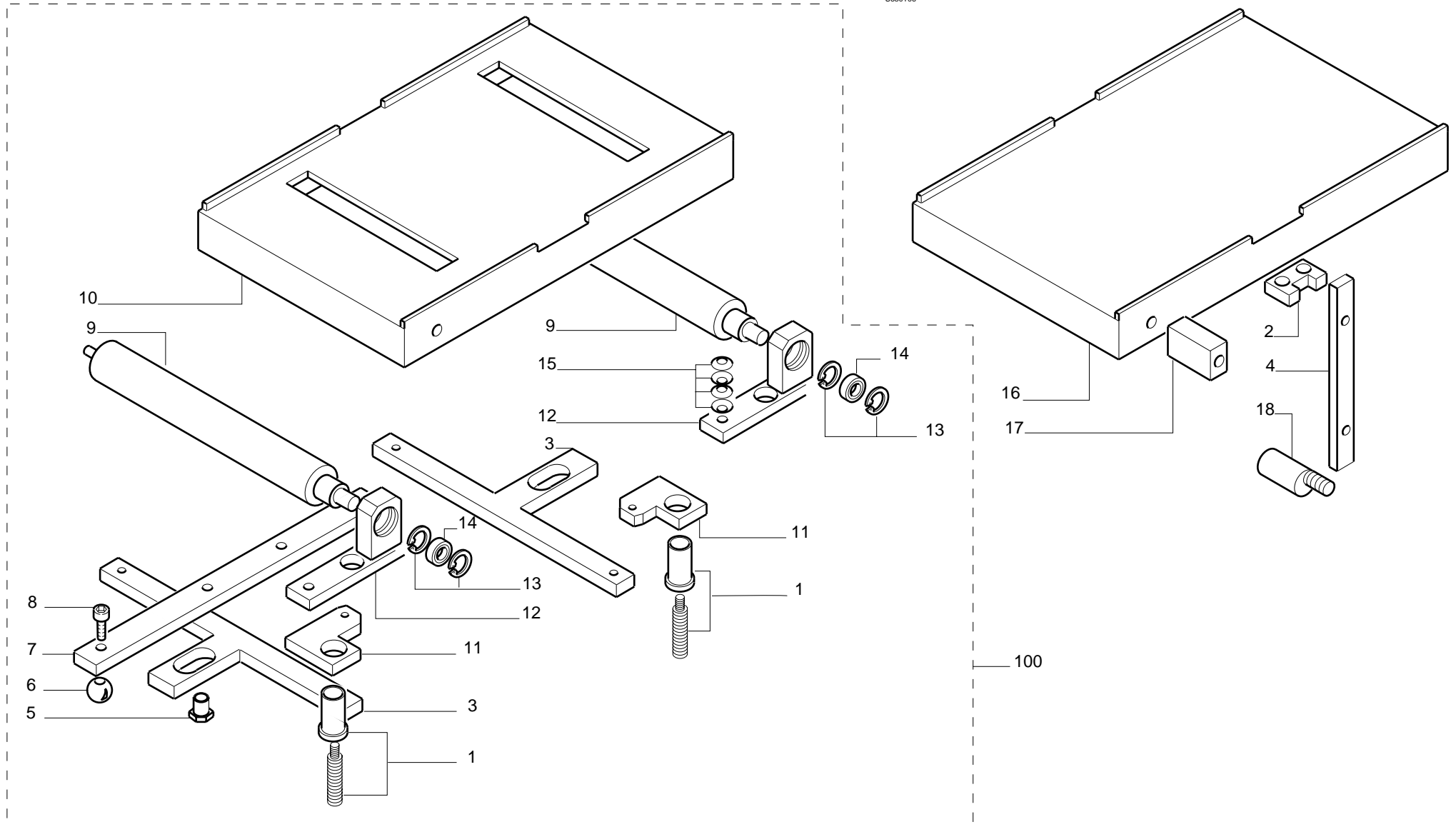
REGOLAZIONE PNEUMATICA DELLA PRESSIONE - (December '93, p.28,01,2004)
PNEUMATIC PRESSURE ADJUSTMENT - REGULATION PNEUMATIQUE DE LA PRESSION
PNEUMATISCHE DRUCKREGULIERUNG - REGULACIÓN NEUMÁTICA DE LA PRESIÓN

350-0302-0

**S 630****PIANO SPESSORE - (December '93, p.28,01,2004)
THICKNESSING TABLE - TABLE RABOTEUSE
DICKENTISCH - MESA REGRUESADORA****350-0401-0**

N	P	C	CODICE	Q.TY	DENOMINAZIONE	DESCRIPTION	DESIGNATION	BEZEICHNUNG	DENOMINACION
1			2734917101D	4.00	PRIGIONIERO	STUD BOLT	VIS PRISONNIERE	STIFTSCHRAUBE	PERNO PRISIONERO
2			0334921800B	2.00	PIATTINO	PLATE	PLATEAU	PLATTE	PLATO
3			0535022000B	2.00	ASTA	ROD	TIGE	STANGE	ASTA
4			0335021000F	2.00	GUIDA	GUIDE	GUIDE	FUEHRUNG	GUIA
5			0324422400G	6.00	BOCCOLA	BUSHING	DOUILLE	BUCHSE	CASQUILLO
6			0303010301D	1.00	POMELLO	BALL GRIP	POIGNEE	KUGELGRIFF	POMO
7			0335022100L	1.00	LEVA	LEVER	LEVIER	HEBEL	PALANCA
8			0000310301D	1.00	VITE	SCREW	VIS	SCHRAUBE	TORNILLO
9			0335020200L	2.00	RULLO	ROLLER	ROULEAU	WALZE	RODILLO
10			0335020100G	1.00	PIANO	TABLE	TABLE	TISCH	MESA
11			0334922501H	4.00	BIELLA	CONNECTING ROD	BIELLE	PLEUELSTANGE	BIELA
12			0534921500L	4.00	SUPPORTO	SUPPORT	SUPPORT	STUETZE	SOPORTE
13			0000644033L	8.00	ANELLO SEEGER	CIRCLIP	CIRCLIP	SEEGERRING	SEEGER
14			0000606236D	4.00	CUSCINETTO	BEARING	ROULEMENT	LAGER	COJINETE
15			0000617826L	20.00	MOLLA TAZZA	SPRING	RESSORT	FEDER	RESORTE
16			0335020101L	1.00	PIANO	TABLE	TABLE	TISCH	MESA
17			0324421500H	1.00	INDICE	POINTER	INDICATEUR	ZEIGER	INDICE
18			0334922200L	2.00	ECCENTRICO	ECCENTRIC	EXCENTRIQUE	NOCKEN	EXCENTRICO
100			2935062101F	1.00	ASSIEME PIANO	TABLE UNIT	ENSEMBLE TABLE	TISCHEINHEIT	CONJ. MESA

S630T06



S 630

PIANO SPESSORE - (December '93, p.28,01,2004)
THICKENING TABLE - TABLE RABOTEUSE
DICKENTISCH - MESA REGRUESADORA

350-0401-0

**S 630**

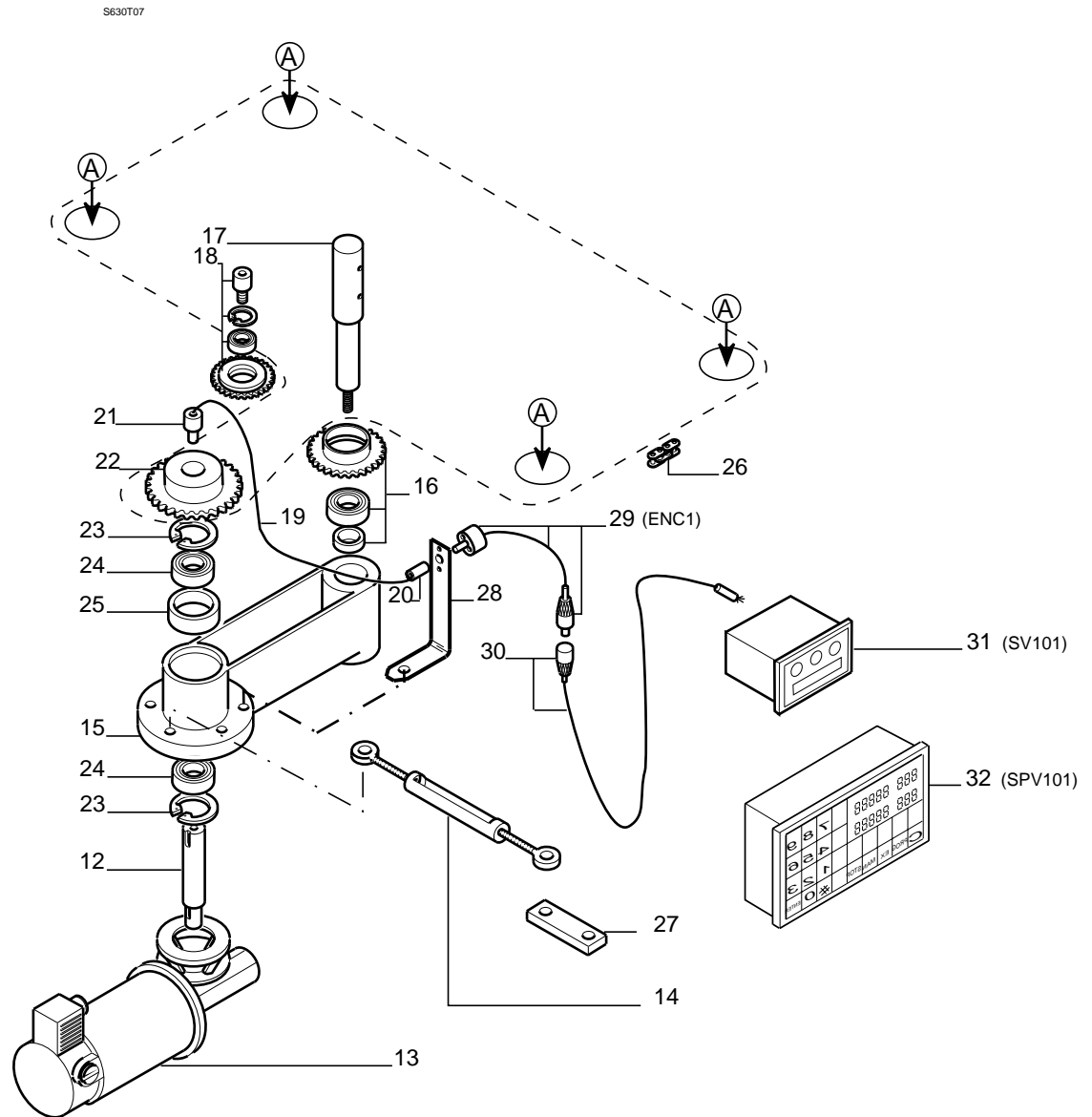
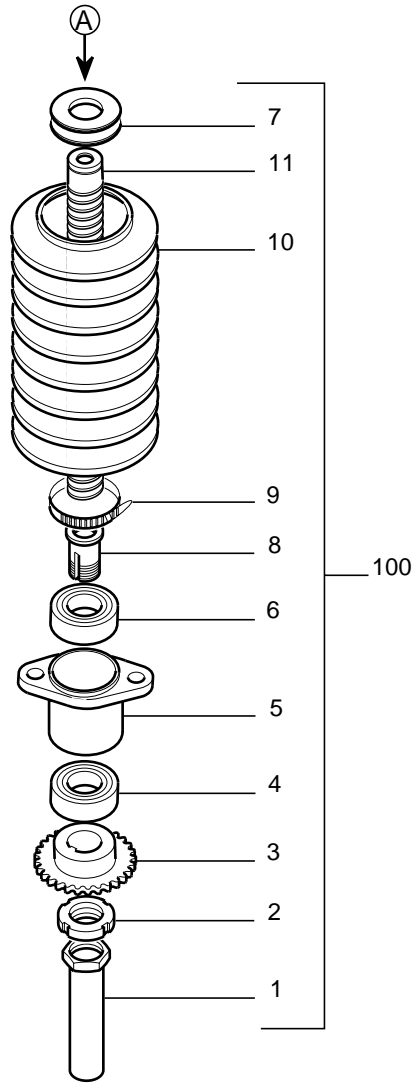
REGOLAZIONE VERTICALE PIANO E VITI SOLL. - (December '93, p.28,01,2004)

HEIGHT ADJUSTMENT OF WORK TABLE AND LIFT - REGLAGE VERTICAL TABLE ET VIS DE SOULEVE

HOEHENVERSTELLUNG DES TISCHES UND HUBSCH - REGUL. VERTICAL MESA Y TORNILLO DE ELEV.

350-0501-0

N	P	C	CODICE	Q.TY	DENOMINAZIONE	DESCRIPTION	DESIGNATION	BEZEICHNUNG	DENOMINACION
1			0334925000H	4.00	PROTEZIONE	GUARD	PROTECTION	ABDECKUNG	PROTECCION
2			0000301854F	4.00	GHIERA	RING NUT	EMBOUT	NUTMUTTER	COLLAR
3			0334920600F	4.00	PIGNONE	SPROCKET	PIGNON	RITZEL	PIÑON
4			0000606205H	4.00	CUSCINETTO	BEARING	ROULEMENT	LAGER	COJINETE
5			0334920700H	4.00	SUPPORTO	SUPPORT	SUPPORT	STUETZE	SOPORTE
6			0000612027H	4.00	CUSCINETTO	BEARING	ROULEMENT	LAGER	COJINETE
7			0334923300C	4.00	RONDELLA	WASHER	RONDELLE	SCHEIBE	ARANDELA
8			0334920900C	4.00	MADREVITE	NUT SCREW	VIS-MERE	MUTTERGEWINDE	TUERCA
9			0000629091C	4.00	FASCETTA	BAND	BANDE	BAND	FAJA
10			0334920800A	4.00	SOFFIETTO	BELLOWS	SOUFFLET	BALG	FUELLE
11			0334922000E	4.00	VITE	SCREW	VIS	SCHRAUBE	TORNILLO
12			0334924300D	1.00	ALBERO	SHAFT	ARBRE	WELLE	EJE
13			0000633324D	1.00	MOTORIDUTTORE	GEARED MOTOR	MOTOREDUCTEUR	GETRIEBEMOTOR	MOTOREDUCTOR
14			0000640538G	1.00	TENDITORE	STRETCHER	TENDEUR	SPANNER	SENSOR
15			0334923700B	1.00	BIELLA	CONNECTING ROD	BIELLE	PLEUELSTANGE	BIELA
16			1034924100D	1.00	KIT GALOPP.TENDICATENA	KIT CHAIN STRETCHER GUIDE	JEAU GALOPPIN TENDEUR	KETTERSPANNER-UMLENKEROL.	KIT POLEA EXTIENDE-CADENA
17			0334924000G	1.00	PERNO	PIN	PIVOT	BOLZEN	PERNO
18			1035021200E	1.00	KIT PIGNONE TENDICINGHIA	KIT BELT STRETCHER SPROC.	JEAU PIGNON TENDEUR CORR.	RIEMENSPANNERRITZEL	KIT PIÑON EXTIENDE-CORREA
19			0000640182A	1.00	CAVO	CABLE	CABLE	KABEL	CABLE
20			0325221009G	1.00	GIUNTO	JOINT	JOINT	KUPPLUNG	JUNTA
21			0335021600L	1.00	PERNO	PIN	PIVOT	BOLZEN	PERNO
22			0334924200B	1.00	PIGNONE	SPROCKET	PIGNON	RITZEL	PIÑON
23			0000644043A	2.00	ANELLO SEEGER	CIRCLIP	CIRCLIP	SEEGERRING	SEEGER
24			0000606256F	2.00	CUSCINETTO	BEARING	ROULEMENT	LAGER	COJINETE
25			0334924400F	1.00	DISTANZIALE	SPACER	ENTRETOISE	DISTANZSTUECK	DISTANCIADOR
26			0000602480F	1.00	CATENA	CHAIN	CHAINE	KETTE	CADENA
27			0335013000F	1.00	RIGHETTA	RULE	REGLETTE	SCHIENE	REGLA
28			0335021700B	1.00	SUPPORTO	SUPPORT	SUPPORT	STUETZE	SOPORTE
29			2723843005H	1.00	ENCODER	ENCODER	ENCODER	ENCODER	ENCODER
30			1035009000E	1.00	SPINOTTO	PIN	CHEVILLE	BOLZEN	ESPARRAGO
31			9622020314A	1.00	VISUALIZZATORE	DISPLAY	VISUALISATEUR	ANZEIGE	LECTOR
32			9622089554C	1.00	POSIZIONATORE	POSITIONER	POSITIONNEUR	STELLWERK	POSICIONADOR
100			1034922000L	0.00	KIT MADREVI.SOLLEVAMENTO	KIT LEAD NUT FOR THICKN.	JEAU ECROU SOULEVEMENT	MUTTER ZUM DICKENTISCHHUB	KIT ROSCA Y TORNILLO ELEV



S630T07



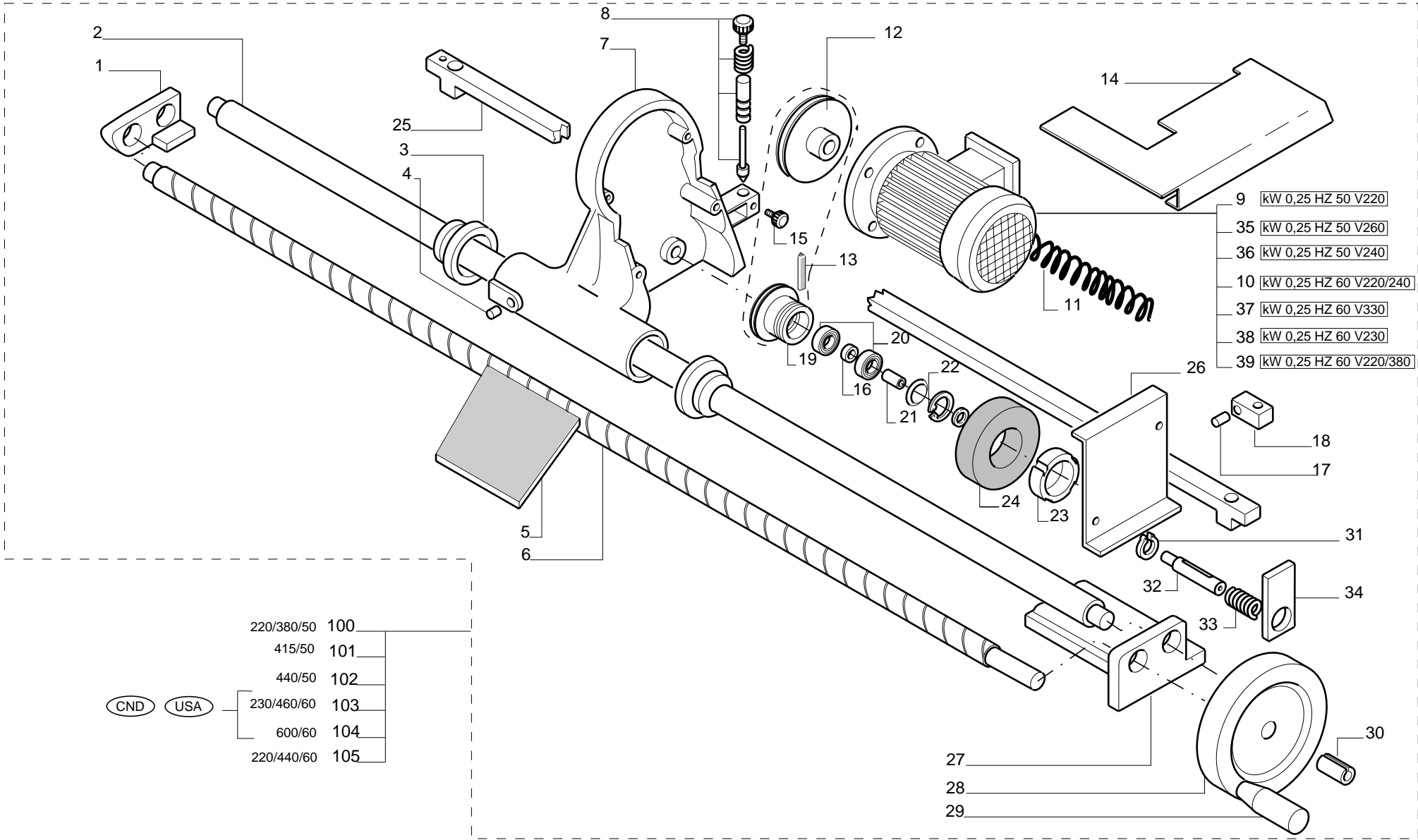
S 630

REGOLAZIONE VERTICALE PIANO E VITI SOLL. - (December '93, p.28,01,2004)
 HEIGHT ADJUSTMENT OF WORK TABLE AND LIFT - REGLAGE VERTICAL TABLE ET VIS DE SOULEVE
 HOEHENVERSTELLUNG DES TISCHES UND HUBSCH - REGUL. VERTICAL MESA Y TORNILLO DE ELEV.

350-0501-0

N	P	C	CODICE	Q.TY	DENOMINAZIONE	DESCRIPTION	DESIGNATION	BEZEICHNUNG	DENOMINACION
1			0324450900C	1.00	SUPPORTO	SUPPORT	SUPPORT	STUETZE	SOPORTE
2			0325850200D	1.00	PERNO	PIN	PIVOT	BOLZEN	PERNO
3			0000609235E	2.00	ANELLO DI TENUTA	SEALING RING	BAGUE DE ETANCHEITE	DICHTRING	ANILLO DE SUJECION
4			0324450102L	1.00	PERNO	PIN	PIVOT	BOLZEN	PERNO
5			0324450101G	1.00	GREMBIULE	*TRAD MANCANTE*	*TRAD MANCANTE*	*TRAD MANCANTE*	*TRAD MANCANTE*
6			0325850300F	1.00	VITE	SCREW	VIS	SCHRAUBE	TORNILLO
7			0324450100E	1.00	CORPO	BODY	CORPS	KOERPER	CUERPO
8			2915401201F	1.00	PERNO	PIN	PIVOT	BOLZEN	PERNO
9			0715435501G	1.00	MOTORE TRIF.	3-PH. MOTORS	3-PH. MOTEURS	3-PH. MOTOREN	MOT.TRIFAS.
10			0715435507A	1.00	MOTORE TRIF.	3-PH. MOTORS	3-PH. MOTEURS	3-PH. MOTOREN	MOT.TRIFAS.
11			0324451600G	1.00	CAVO	CABLE	CABLE	KABEL	CABLE
12			0324451500E	1.00	PULEGGIA	PULLEY	POULIE	RIEMENSCHIEBE	POLEA
13			0000603422E	1.00	CINGHIA TRAP	V-BELT	COURROIE TRAPEZOIDALE	KEILRIEMEN	CORREA TRAPEZ.
14			0535013400L	1.00	CARTER	COVER	CARTER	DECKEL	CARTER
15			0315439000L	1.00	POMELLO	BALL GRIP	POIGNEE	KUGELGRIFF	POMO
16			0324450500D	1.00	DISTANZIALE	SPACER	ENTRETOISE	DISTANZSTUECK	DISTANCIADOR
17			0000106511B	1.00	STICK RAVVIVAMOLE	*TRAD MANCANTE*	*TRAD MANCANTE*	*TRAD MANCANTE*	*TRAD MANCANTE*
18			0324451300A	1.00	SUPPORTO	SUPPORT	SUPPORT	STUETZE	SOPORTE
19			0324450300L	1.00	PULEGGIA	PULLEY	POULIE	RIEMENSCHIEBE	POLEA
20			0000606107A	2.00	CUSCINETTO	BEARING	ROULEMENT	LAGER	COJINETE
21			0324450400B	1.00	PERNO	PIN	PIVOT	BOLZEN	PERNO
22			0000644041F	1.00	ANELLO SEEGER	CIRCLIP	CIRCLIP	SEEGERRING	SEEGER
23			0324450600F	1.00	GHIERA	RING NUT	EMBOUT	NUTMUTTER	COLLAR
24			0000101545H	1.00	MOLA	*TRAD MANCANTE*	*TRAD MANCANTE*	*TRAD MANCANTE*	*TRAD MANCANTE*
25			0525850400C	1.00	BARRA	BAR	BARRE	STANGE	BARRA
26			0324450200G	1.00	CARTER	COVER	CARTER	DECKEL	CARTER
27			0324450800A	1.00	SUPPORTO	SUPPORT	SUPPORT	STUETZE	SOPORTE
28			0319025010H	1.00	VOLANTINO	HANDWHEEL	VOLANT A MAIN	HANDRAD	VOLANTE
29			0000619171A	1.00	IMPUGNATURA	GRIP	POIGNEE	HANDGRIFF	EMPUÑADURA
30			0319030007L	1.00	BOCCOLA	BUSHING	DOUILLE	BUCHSE	CASQUILLO
31			0000644264L	1.00	ANELLO SEEGER	CIRCLIP	CIRCLIP	SEEGERRING	SEEGER
32			0325850103H	1.00	PERNO	PIN	PIVOT	BOLZEN	PERNO
33			0315438103G	1.00	MOLLA	SPRING	RESSORT	FEDER	RESORTE
34			0325850104A	1.00	BARRA	BAR	BARRE	STANGE	BARRA
35			0715435502L	1.00	MOTORE TRIF.	3-PH. MOTORS	3-PH. MOTEURS	3-PH. MOTOREN	MOT.TRIFAS.
36			0715435503B	1.00	MOTORE TRIF.	3-PH. MOTORS	3-PH. MOTEURS	3-PH. MOTOREN	MOT.TRIFAS.
37			0715435508C	1.00	MOTORE TRIF.	3-PH. MOTORS	3-PH. MOTEURS	3-PH. MOTOREN	MOT.TRIFAS.
38			0715435509E	1.00	MOTORE TRIF.	3-PH. MOTORS	3-PH. MOTEURS	3-PH. MOTOREN	MOT.TRIFAS.
39			0715435510F	1.00	MOTORE TRIF.	3-PH. MOTORS	3-PH. MOTEURS	3-PH. MOTOREN	MOT.TRIFAS.
100			1035050000F	1.00	KIT AFFILATRICE				

S630T08



- 9 kW 0,25 HZ 50 V220
- 35 kW 0,25 HZ 50 V260
- 36 kW 0,25 HZ 50 V240
- 10 kW 0,25 HZ 60 V220/240
- 37 kW 0,25 HZ 60 V330
- 38 kW 0,25 HZ 60 V230
- 39 kW 0,25 HZ 60 V220/380

- | | | |
|--------------------|------------|-----|
| <p>(CND) (USA)</p> | 220/380/50 | 100 |
| | 415/50 | 101 |
| | 440/50 | 102 |
| | 230/460/60 | 103 |
| | 600/60 | 104 |
| | 220/440/60 | 105 |



S 630

AFFILATRICE
KNIFE GRINDING DEVICE
SCHLEIFVORRICHTUNG

- (December '93, p.28,01,2004)

- AFFUTEUSE

350-0601-0



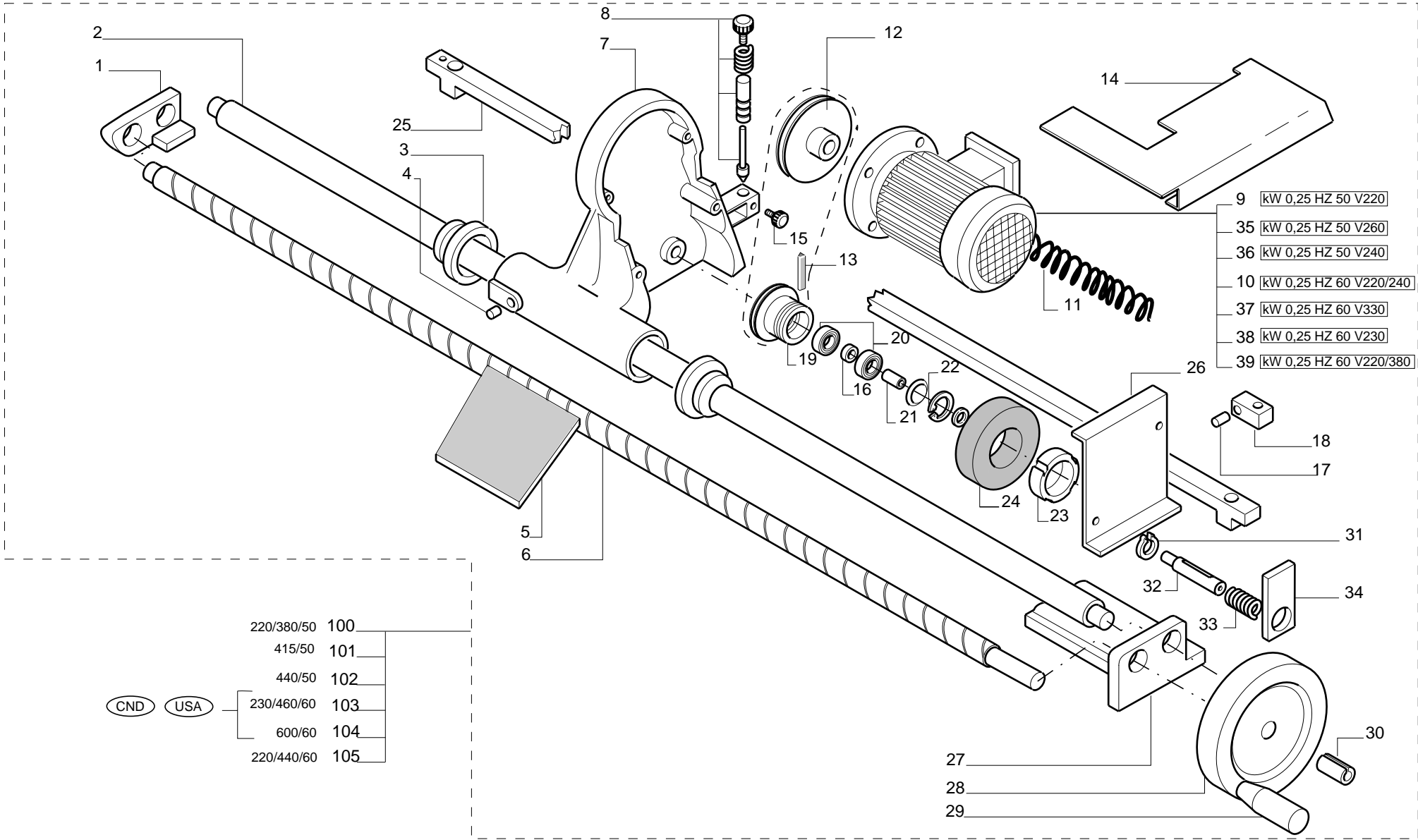
S 630

AFFILATRICE - (December '93, p.28,01,2004)
KNIFE GRINDING DEVICE - AFFUTEUSE
SCHLEIFVORRICHTUNG -

350-0601-0

N	P	C	CODICE	Q.TY	DENOMINAZIONE	DESCRIPTION	DESIGNATION	BEZEICHNUNG	DENOMINACION
101			1035050001H	1.00	KIT AFFILATRICE				
102			1035050002A	1.00	KIT AFFILATRICE				
103			1035050003C	1.00	KIT AFFILATRICE				
104			1035050004E	1.00	KIT AFFILATRICE				
105			1035050005G	1.00	KIT AFFILATRICE				

S630T08



- 9 kW 0,25 HZ 50 V220
- 35 kW 0,25 HZ 50 V260
- 36 kW 0,25 HZ 50 V240
- 10 kW 0,25 HZ 60 V220/240
- 37 kW 0,25 HZ 60 V330
- 38 kW 0,25 HZ 60 V230
- 39 kW 0,25 HZ 60 V220/380

- | | | |
|--|------------|-----|
| <div style="display: flex; gap: 10px;"> <div style="border: 1px solid black; border-radius: 50%; padding: 2px;">CND</div> <div style="border: 1px solid black; border-radius: 50%; padding: 2px;">USA</div> </div> | 220/380/50 | 100 |
| | 415/50 | 101 |
| | 440/50 | 102 |
| | 230/460/60 | 103 |
| | 600/60 | 104 |
| | 220/440/60 | 105 |



S 630

AFFILATRICE
KNIFE GRINDING DEVICE
SCHLEIFVORRICHTUNG

- (December '93, p.28,01,2004)

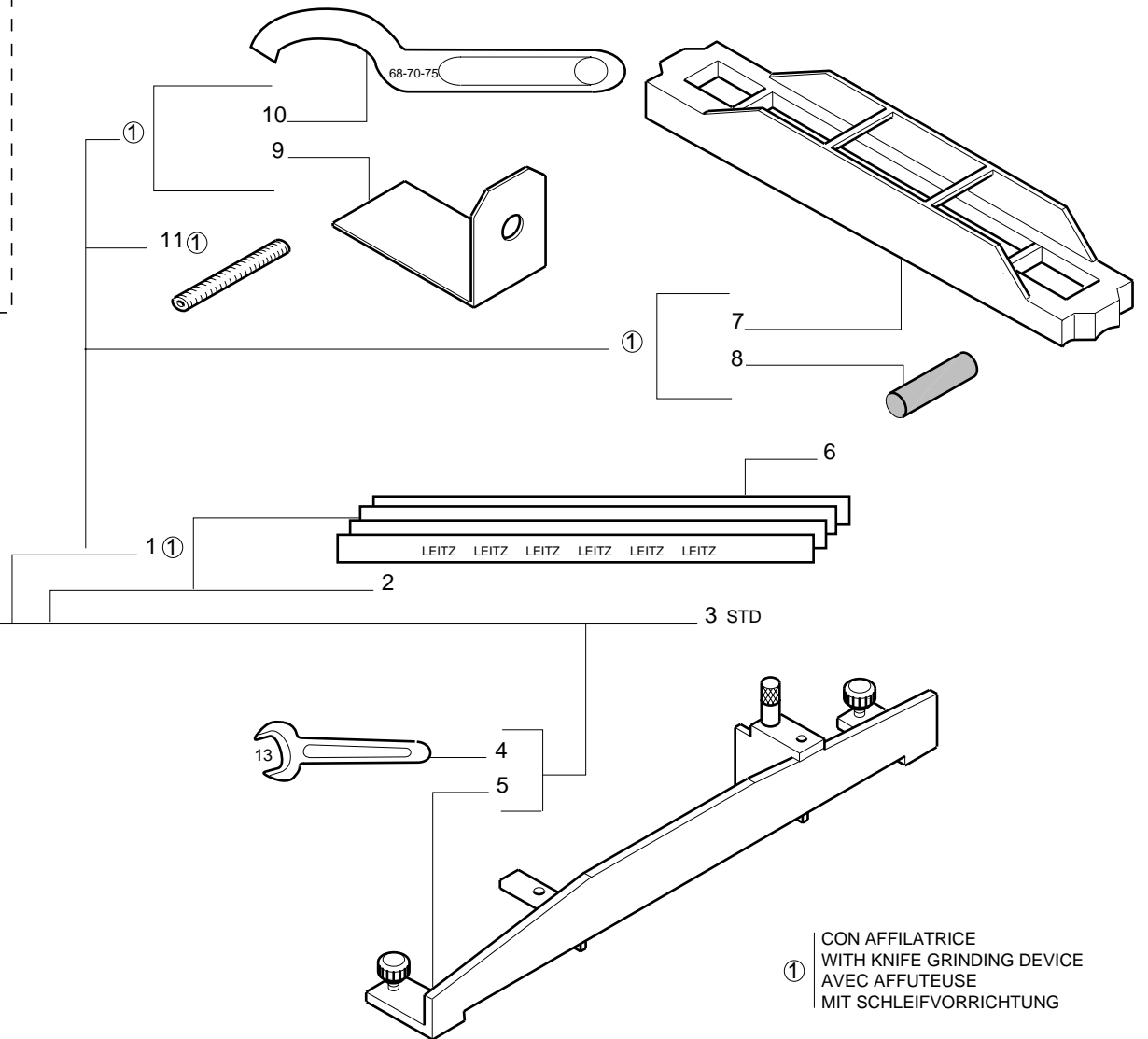
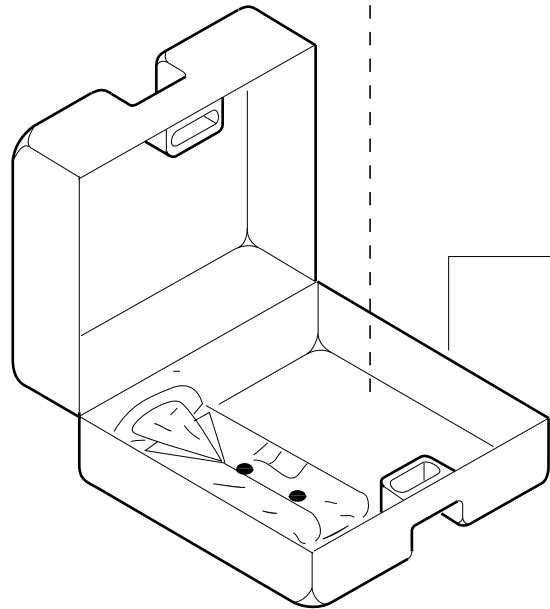
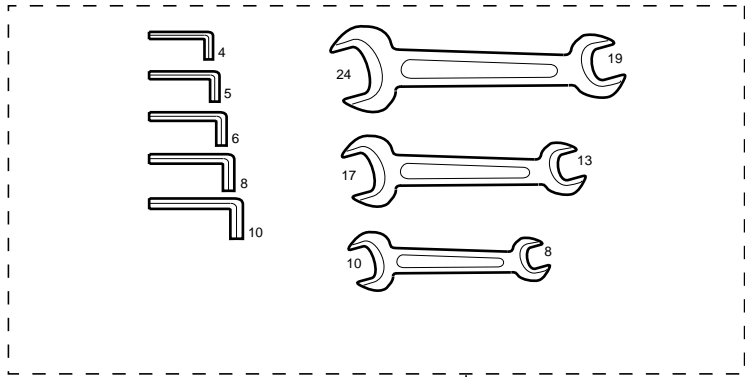
- AFFUTEUSE

350-0601-0

**S 630****ACCESSORI A CORREDO - (December '93, p.28,01,2004)
STANDARD ACCESSORIES - ACCESSOIRES STANDARD
ZUBEHOER - ACCESORIOS DE EQUIPAMIENTO****350-0701-0**

N	P	C	CODICE	Q.TY	DENOMINAZIONE	DESCRIPTION	DESIGNATION	BEZEICHNUNG	DENOMINACION
1			1035090002L	1.00	KIT PACCO ACCESSORI	ACCESSORIES BAG	PAC ACCESOIRES	ZUBEHOERTASCHE	ACCESSORIOS DE EQUIPAM.
2			1035090001G	1.00	KIT PACCO ACCESSORI	ACCESSORIES BAG	PAC ACCESOIRES	ZUBEHOERTASCHE	ACCESSORIOS DE EQUIPAM.
3			1035090000E	1.00	KIT PACCO ACCESSORI	ACCESSORIES BAG	PAC ACCESOIRES	ZUBEHOERTASCHE	ACCESSORIOS DE EQUIPAM.
4			0306330203A	1.00	CHIAVE (ATTREZZO)	WRENCH	CLEF	SCHLUESSEL	LLAVE
5			2925865101G	1.00	REGISTRACOLTELLI	KNIFE-SETTING GAUGE	APPAREIL REGLAGE COUTEAUX	MESSEREINSTELLEHRE	DISP. REG. CUCHILLAS
6			0000605293C	2.00	COLTELLO	KNIFE	COUTEAU	MESSER	CUCHILLO
7			0306336600L	1.00	DIMA	TEMPLATE	PROFIL	SCHABLONE	PERFIL
8			0000106511B	1.00	STICK RAVVIVAMOLE	*TRAD MANCANTE*	*TRAD MANCANTE*	*TRAD MANCANTE*	*TRAD MANCANTE*
9			0324451700L	1.00	DISTANZIALE	SPACER	ENTRETOISE	DISTANZSTUECK	DISTANCIADOR
10			0002319524B	1.00	CHIAVE	KEY	CLEF	SCHLUESSEL	LLAVE
11			0335033600D	1.00	GRANO	DOWEL	VIS SIX PANS CREUX	DUEBEL	PASADOR

S630T09



① CON AFFILATRICE
 WITH KNIFE GRINDING DEVICE
 AVEC AFFUTEUSE
 MIT SCHLEIFVORRICHTUNG



S 630

ACCESSORI A CORREDO - (December '93, p.28,01,2004)
 STANDARD ACCESSORIES - ACCESSOIRES STANDARD
 ZUBEHOER - ACCESORIOS DE EQUIPAMIENTO

350-0701-0

**S 630**

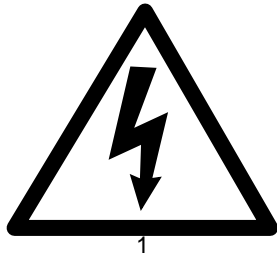
TARGHETTE - (December '93, p.28,01,2004)

PLATES - PLAQUETTES

SCHILDER - TARJETAS

350-0801-0

N	P	C	CODICE	Q.TY	DENOMINAZIONE	DESCRIPTION	DESIGNATION	BEZEICHNUNG	DENOMINACION
1			0302110147F	1.00	TARGA	RATING PLATE	PLAQUE	SCHILD	TARJETA
2			0302110170D	1.00	TARGHETTA	RATING PLATE	PLAQUETTE	SCHILD	TARJETA
3			0335042100D	1.00	TARGA	RATING PLATE	PLAQUE	SCHILD	TARJETA
4			0334926000L	1.00	TARGA	RATING PLATE	PLAQUE	SCHILD	TARJETA
5			0302110149A	1.00	TARGA	RATING PLATE	PLAQUE	SCHILD	TARJETA
6			0303010110H	1.00	TARGA	RATING PLATE	PLAQUE	SCHILD	TARJETA
7			0302110165D	1.00	TARGHETTA	RATING PLATE	PLAQUETTE	SCHILD	TARJETA
8			0315334404A	1.00	TARGHETTA	RATING PLATE	PLAQUETTE	SCHILD	TARJETA
9			0302110184D	1.00	TARGA	RATING PLATE	PLAQUE	SCHILD	TARJETA
10			0302110185F	1.00	TARGA	RATING PLATE	PLAQUE	SCHILD	TARJETA
11			0302110186H	1.00	TARGA	RATING PLATE	PLAQUE	SCHILD	TARJETA
12			0302110187A	1.00	TARGA	RATING PLATE	PLAQUE	SCHILD	TARJETA
13			0302110188C	1.00	TARGA	RATING PLATE	PLAQUE	SCHILD	TARJETA
14			0325210008B	1.00	TARGHETTA	RATING PLATE	PLAQUETTE	SCHILD	TARJETA



1

STEUERUNG

5

SCHUTZVORRICHTUNGEN FÜR
SONDERARBEITSGÄNGE SIEHE
BETRIEBSANWEISUNG

6

MOTOREN kW 7,5

2

MANOVRARE CON TRAINO
IN MOVIMENTO

MANOEUVRER AVEC ENTRAINEMENT
EN MOUVEMENT

OPERATE WITH FEED
UNIT IN MOVEMENT

BETAETIGUNG NUR BEI
BETRIEBENER VORSCHUB

3

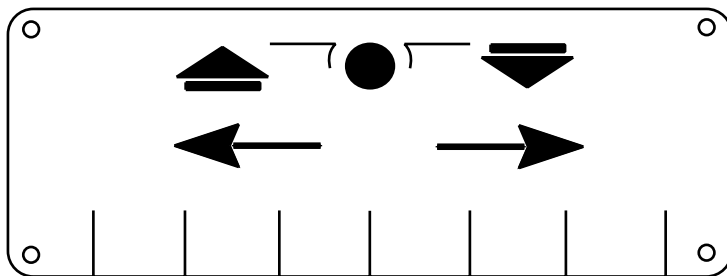
IL MOTORE PRINCIPALE PARTE SOLO
SE LO SPORTELLO E' BEN CHIUSO

LE MOTEUR PRINCIPAL PEUT DEMARRER
SEULEMENT SI LA PORTE EST BIEN FERMEE

HAUPTMOTOR LAUFT AN NUR WENN
DIE TUR GESDHLOSSEN IST

MAIN MOTOR CAN START ONLY IF THE
DOOR IS PERFECTLY CLOSED

14



4

SPORGENZA COLTELLI
SAILLE COUTEAUX 1 mm
KNIFE PROJECTION
MESSERVORSPURG

8

SCM ITALY N.4500

7

AVVERTENZE DI SICUREZZA

- Questa macchina è pericolosa - Attenzione!
Solo operatori preparati possono impiegare la macchina.
- Leggere attentamente il "MANUALE ISTRUZIONI" prima di iniziare a lavorare.
Il "MANUALE ISTRUZIONI" è sempre fornito con la macchina e contiene informazioni ed avvertimenti di estrema importanza riguardanti l'utilizzo della medesima.
Un uso improprio della macchina potrebbe provocare danni alle persone.
- Non utilizzare mai la macchina senza che le protezioni di sicurezza siano al loro posto.
Usarla solamente quando gli sportelli e le protezioni sono nella giusta posizione di protezione.
- Prima di eseguire operazioni di lubrificazione, pulizia, registrazione, manutenzione o riparazioni, spegnere la macchina ed isolarla elettricamente.
- Tenere lontane tutte le parti del corpo dalle parti mobili della macchina, sia quando essa è in funzione che quando si ferma.
- Accertarsi che sulla macchina sia stato effettuato il collegamento a terra prima di utilizzarla.
- Non mettere mai le mani o dita tra il pezzo di legno da lavorare e la cinghia di avanzamento o vicino le lame, frese o nastri abrasivi.
- Non indossare guanti, gioielli o abiti slacciati (come maglioni, giacche, ecc.) mentre si lavora o si è vicini alla macchina in funzione.
- Assicurarsi che tutti gli utensili rotanti siano perfettamente equilibrati, affilati ed accuratamente serrati.
Non impiegare mai lame o utensili incrinati, deformati ed oltre il limite di velocità indicato su di essi.
- Indossare sempre occhiali protettivi quando si lavora o si sta vicino alla macchina in funzione.
- Non sovraccaricare la potenzialità della macchina; ricordarsi sempre di regolarla per il normale utilizzo che ne può essere fatto.
- Non lavorare materiali che provocano scintille (come acciaio) con materiali combustibili (come polveri di alluminio e magnesio) perchè c'è il rischio che si sviluppi un incendio.
- Tenere sempre pulito e mordinato lo spazio circostante la macchina.
- Una scarsa manutenzione potrebbe generare scivoloni, cadute ed altri danni.
- La concentrazione è d'obbligo in ogni momento.
La mancanza di attenzione al movimento della mano è causa di molti incidenti.
- NON TOGLIERE MAI QUESTA TARGHETTA "AVVERTENZE DI SICUREZZA", che deve essere fissata in modo permanente sulla macchina.
La rimozione di questa targa potrebbe causare danni a Lei e ad altri, rendendola responsabile.

I 9

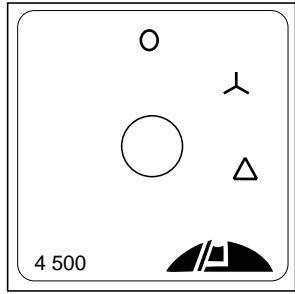
F 10

D 11

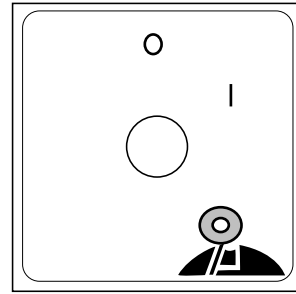
GB 12

E 13

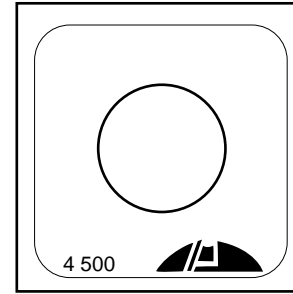
N	P	C	CODICE	Q.TY	DENOMINAZIONE	DESCRIPTION	DESIGNATION	BEZEICHNUNG	DENOMINACION
2			0327010001H	1.00	MOSTRINA	PLATE	PLAQUETTE	PLAETTCHEN	TARJ. INDIC.
3			0327010005G	1.00	MOSTRINA	PLATE	PLAQUETTE	PLAETTCHEN	TARJ. INDIC.
4			0327020001A	1.00	MOSTRINA	PLATE	PLAQUETTE	PLAETTCHEN	TARJ. INDIC.
5			0327020002C	1.00	MOSTRINA	PLATE	PLAQUETTE	PLAETTCHEN	TARJ. INDIC.
6			0327022000A	1.00	MOSTRINA	PLATE	PLAQUETTE	PLAETTCHEN	TARJ. INDIC.
7			0327030007F	1.00	MOSTRINA	PLATE	PLAQUETTE	PLAETTCHEN	TARJ. INDIC.
8			0327030020C	1.00	MOSTRINA	PLATE	PLAQUETTE	PLAETTCHEN	TARJETA
9			0327030164H	1.00	MOSTRINA	PLATE	PLAQUETTE	PLAETTCHEN	TARJ. INDIC.
11			0327050000E	1.00	MOSTRINA	PLATE	PLAQUETTE	PLAETTCHEN	TARJETA
12			0327050001G	1.00	MOSTRINA	PLATE	PLAQUETTE	PLAETTCHEN	TARJ. INDIC.
13			0327030021E	0.00	MOSTRINA	PLATE	PLAQUETTE	PLAETTCHEN	TARJ. INDIC.
14			0327055001C	0.00	MOSTRINA	PLATE	PLAQUETTE	PLAETTCHEN	TARJ. INDIC.



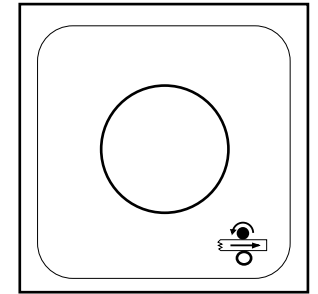
2



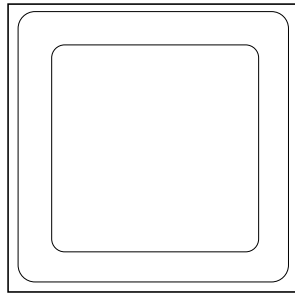
3



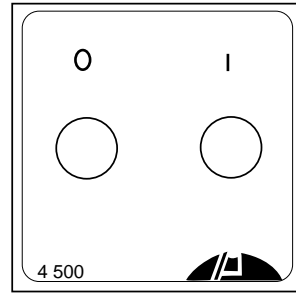
4



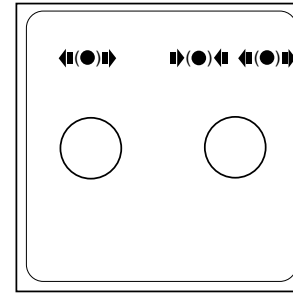
5



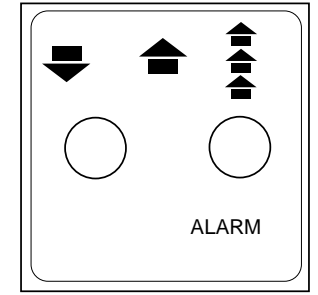
6



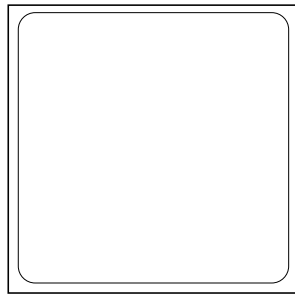
7



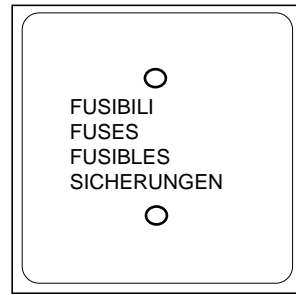
8



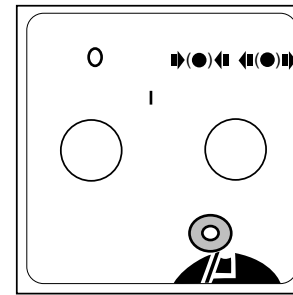
9



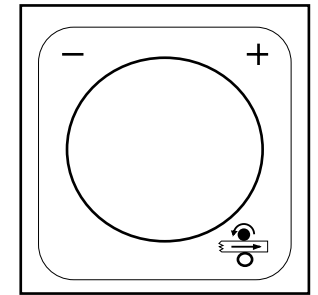
11



12

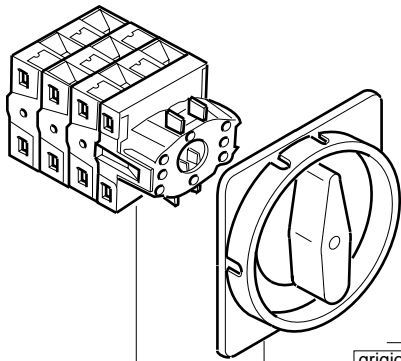


13



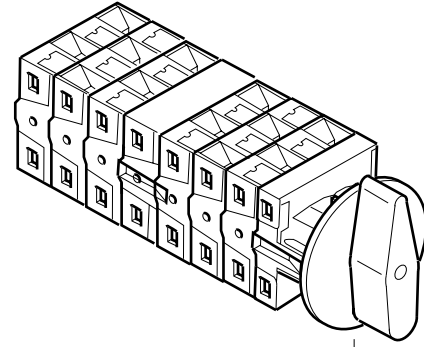
14

N	P	C	CODICE	Q.TY	DENOMINAZIONE	DESCRIPTION	DESIGNATION	BEZEICHNUNG	DENOMINACION
1			0001347624F	1.00	MANOPOLA	HAND GRIP	POIGNEE	GRIFF	MANOPLA
2			0001347623D	1.00	MANOPOLA	HAND GRIP	POIGNEE	GRIFF	MANOPLA
3			0001307715A	1.00	INTERRUTTORE	SWITCH	INTERRUPTEUR	SCHALTER	INTERRUPTOR
4			0001307716C	1.00	INTERRUTTORE	SWITCH	INTERRUPTEUR	SCHALTER	INTERRUPTOR
5			0001307009C	1.00	INTERRUTTORE	SWITCH	INTERRUPTEUR	SCHALTER	INTERRUPTOR
6			0001307055L	1.00	INTERRUTTORE	SWITCH	INTERRUPTEUR	SCHALTER	INTERRUPTOR
7			0001309202D	1.00	COMMUTATORE	COMMUTATOR	COMMUTATEUR	UMSCHALTER	CONMUTADOR
8			0001309203F	1.00	COMMUTATORE	COMMUTATOR	COMMUTATEUR	UMSCHALTER	CONMUTADOR
9			0001309164C	1.00	AVVIATORE	STARTER	DEMARREUR	ANLASSER	ARRANQUE
11			0001307037B	1.00	INTERRUTTORE	SWITCH	INTERRUPTEUR	SCHALTER	INTERRUPTOR
12			0327021003F	2.00	PRIGIONIERO	STUD BOLT	VIS PRISONNIERE	STIFTSCHRAUBE	PERNO PRISIONERO
13			0001342325F	1.00	MAGNETOTERMICO	THERMOMAGNETIC PROTECTION	PROTECTION THERMOMAGN.	THERMOMAGNETISCHER SCHUTZ	MAGNETOTERMICO
14			0001342326H	1.00	MAGNETOTERMICO	THERMOMAGNETIC PROTECTION	PROTECTION THERMOMAGN.	THERMOMAGNETISCHER SCHUTZ	MAGNETOTERMICO
15			0001342327A	1.00	MAGNETOTERMICO	THERMOMAGNETIC PROTECTION	PROTECTION THERMOMAGN.	THERMOMAGNETISCHER SCHUTZ	MAGNETOTERMICO
16			0001342322L	1.00	MAGNETOTERMICO	THERMOMAGNETIC PROTECTION	PROTECTION THERMOMAGN.	THERMOMAGNETISCHER SCHUTZ	MAGNETOTERMICO
17			0001342323B	1.00	MAGNETOTERMICO	THERMOMAGNETIC PROTECTION	PROTECTION THERMOMAGN.	THERMOMAGNETISCHER SCHUTZ	MAGNETOTERMICO
18			0327021004H	1.00	GUIDA	GUIDE	GUIDE	FUEHRUNG	GUIA
19			0327021000L	1.00	PROTEZIONE TRASPARENTE	GUARD	PROTECTION	ABDECKUNG	PROTECCION TRANSPARENTE
20			0001347318G	1.00	CONTATTO AUX	CONTACT	CONTACT	KONTAKT	CONTACTO
21			0001301615B	1.00	BOBINA ELETTRICA	COIL	BOBINE ELECTRIQUE	SPULE	BOBINA ELECTRICA
22			0001304144E	1.00	FUSIBILE	FUSE	FUSIBLE	SICHERUNG	FUSIBLE
23			0001304143C	1.00	FUSIBILE	FUSE	FUSIBLE	SICHERUNG	FUSIBLE
24			0001304231L	1.00	FUSIBILE	FUSE	FUSIBLE	SICHERUNG	FUSIBLE
25			0001304232B	1.00	FUSIBILE	FUSE	FUSIBLE	SICHERUNG	FUSIBLE
26			0001304148D	1.00	FUSIBILE	FUSE	FUSIBLE	SICHERUNG	FUSIBLE
27			0001352428G	1.00	PORTAFUSIBILE	FUSE HOLDER	PORTE-FUSIBLE	SICHERUNGSHALTER	PORTA FUSIBLE
28			0001307924D	1.00	FINECORSIA	LIMIT SWITCH	FIN DE COURSE	ENDSCHALTER	FIN CARRERA

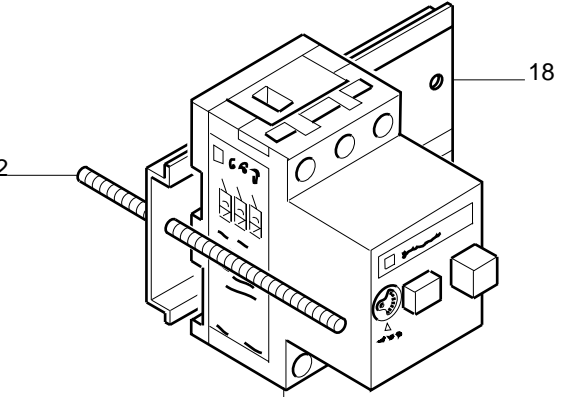


- 1 grigio - azzurro
grey - blue
- 2 giallo - rosso
yellow - red
- 3 [20 A]
- 4 [25 A]
- 5 [32 A]
- 6 [40 A]

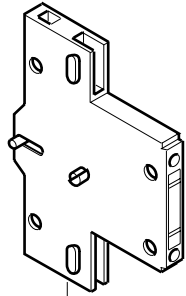
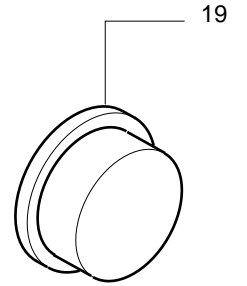
(QS)



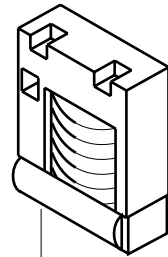
- 7 [20 A]
- 8 [25 A]
- 9 [32 A]
- 11 (QM3)



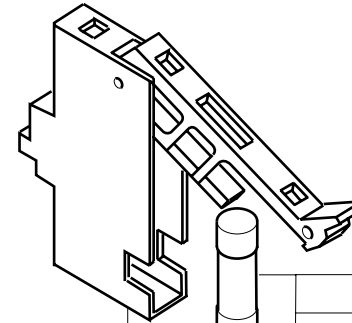
- 13 [10-16 A]
- 14 [16-20 A] (FS1)
- 15 [20-25 A]
- 16 [2,4-4,0 A] (FS2)
- 17 [4,0-6,0 A]



20 (FS1 - FS2)

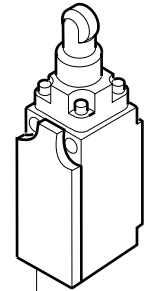


21 (FS1)



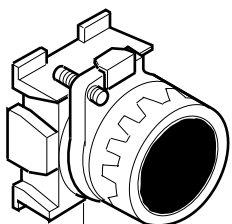
27 (FU1 FU2 FU3)

- 22 [2A AM] (FU1)
- 23 [4A AM] (FU1)
- 24 [2A GL] (FU2)
- 25 [40 GL] (FU2)
- 26 [1A AM] (FU3)

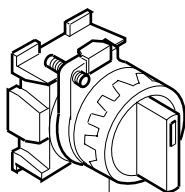


28 (SQ1) (F)

N	P	C	CODICE	Q.TY	DENOMINAZIONE	DESCRIPTION	DESIGNATION	BEZEICHNUNG	DENOMINACION
1			0001307810B	1.00	PULSANTE	PUSHBUTTON	BOUTON	DRUCKKNOPF	PULSADOR
2			0001307825D	1.00	PULSANTE	PUSHBUTTON	BOUTON	DRUCKKNOPF	PULSADOR
3			0001307875L	1.00	SELETTORE	SELECTOR	SELECTEUR	WAEHLSCHALTER	SELECTOR
4			0001307885A	1.00	SELETTORE	SELECTOR	SELECTEUR	WAEHLSCHALTER	SELECTOR
5			0001307515F	1.00	CONTATTO V50 NA	CONTACT	CONTACT	KONTAKT	CONTACTO
6			0001307516H	1.00	CONTATTO V40 NC	CONTACT	CONTACT	KONTAKT	CONTACTO
10			0001305050F	1.00	LAMPADA	LAMP	LAMPE	LAMPE	LAMPARA
11			0001354839B	1.00	TRASFORMATORE	TRANSFORMER	TRANSFORMATEUR	TRANSFORMATOR	TRANSFORMADOR
12			0001354840C	1.00	TRASFORMATORE	TRANSFORMER	TRANSFORMATEUR	TRANSFORMATOR	TRANSFORMADOR
13			0001354833H	1.00	TRASFORMATORE	TRANSFORMER	TRANSFORMATEUR	TRANSFORMATOR	TRANSFORMADOR
14			0001354942L	1.00	AUTOTRASFORMATORE	AUTOTRANSFORMER	AUTOTRANSFORMATEUR	SPARTRANSFORMATOR	AUTOTRANSFORMADOR
15			0001307248L	1.00	PULSANTIERA	PUSHBUTTON PANEL	PANNEAU DE COMMANDE	DRUCKKNOPFTAFEL	BOTONERA
16			2719040200B	1.00	MORSETTIERA ELETTRICA	TERMINAL BOARD	PLAQUE A BORNES	KLEMMENBRETT	PLACA DE BORNES
19			9622039726G	1.00	SCHEDA ELETTRONICA	CARD	CARTE ELECTRONIQUE	ELEKTRONISCHE KARTE	FICHA ELECTRONICA
20			0001304092D	1.00	FUSIBILE	FUSE	FUSIBLE	SICHERUNG	FUSIBLE
21			0001307838B	1.00	PULSANTE LUMINOSO	PUSHBUTTON	BOUTON	DRUCKKNOPF	PULSADOR
22			0001347475L	1.00	PROTEZIONE TRASPARENTE	GUARD	PROTECTION	ABDECKUNG	PROTECCION TRANSPARENTE
23			0001347476B	1.00	COPPETTA	CAP	CHAPEAU	KAPPE	VENTOSA

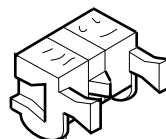


1 (SB3)



3 (SA1)

4 (SA2)

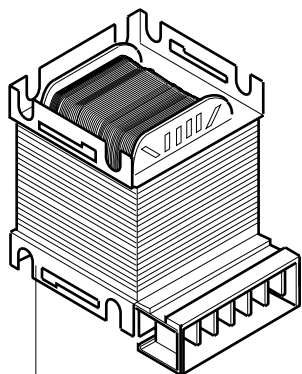


5 1NA V50 (SB2 SA1)

6 1NC V40 (SA1)



10 110/130 V (HL/SB2 HL1)

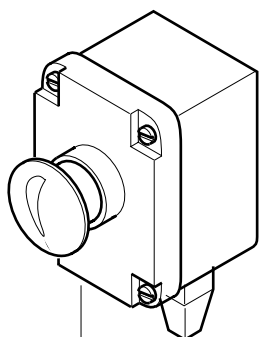


11 280 VA (TC)

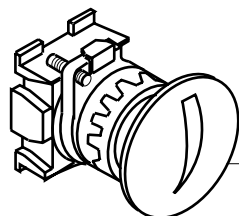
12 400 VA

13 400 VA USA CND

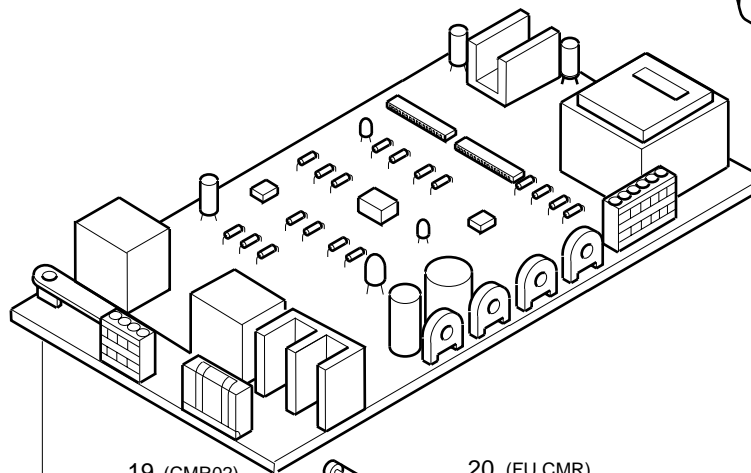
14 (TC2)



15 (SE)

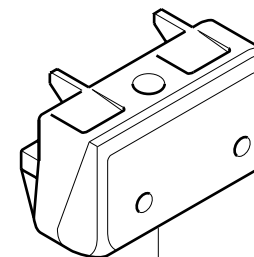


2 (SB3) USA CND

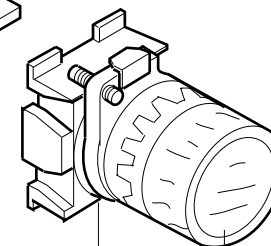


19 (CMR02)

20 (FU CMR)



16



21 (SB2 SB4)

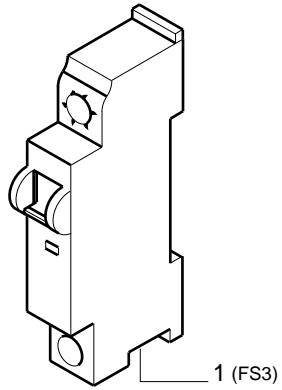
23 (SB2) ROSSO-RED

22 (SB4) BIANCO-WHITE

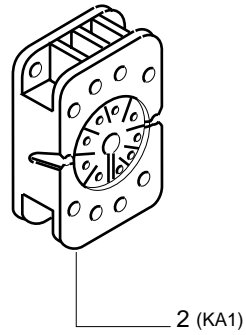
**S 630****COMPONENTI ELETTRICI - (December '93, p.28,01,2004)**
ELECTRICAL COMPONENTS - COMPOSANTS ELECTRIQUES
ELEKTROTEILE - COMPONENTES ELECTRICOS**350-0904-0**

N	P	C	CODICE	Q.TY	DENOMINAZIONE	DESCRIPTION	DESIGNATION	BEZEICHNUNG	DENOMINACION
1			0001307020E	1.00	INTERRUTTORE	SWITCH	INTERRUPTEUR	SCHALTER	INTERRUPTOR
2			0001355503L	1.00	BASE PER RELÈ	BASE	BASE	UNTERLAGE	BASE
3			0001339870G	1.00	RELE'	RELAY	RELAIS	RELAIS	RELE
4			0001347590C	1.00	CONTATTO	CONTACT	CONTACT	KONTAKT	CONTACTO
5			0001347591E	1.00	CONTATTO	CONTACT	CONTACT	KONTAKT	CONTACTO
6			0001354749A	1.00	CONTATTORE	CONTACTOR	CONTACTEUR	KONTAKTGEBER	CONTACTOR
7			0001354774C	1.00	CONTATTORE	CONTACTOR	CONTACTEUR	KONTAKTGEBER	CONTACTOR
8			0001354799F	1.00	CONTATTORE	CONTACTOR	CONTACTEUR	KONTAKTGEBER	CONTACTOR
9			0001354246C	1.00	TEMPORIZZATORE	TIMER	TEMPORISATEUR	ZEITGEBER	TEMPORIZADOR
10			0001354963D	1.00	CONTATTORE	CONTACTOR	CONTACTEUR	KONTAKTGEBER	CONTACTOR

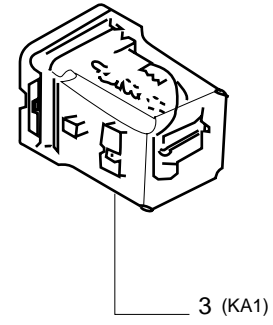
S630T15



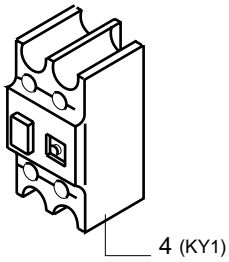
1 (FS3)



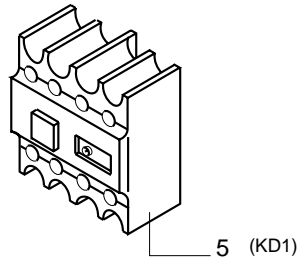
2 (KA1)



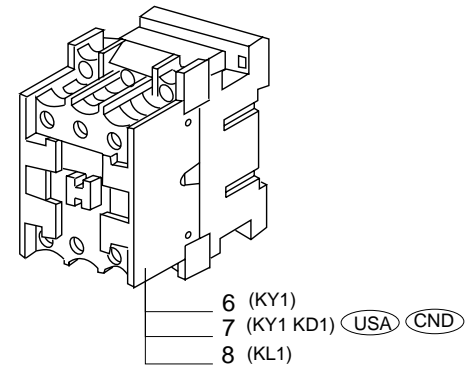
3 (KA1)



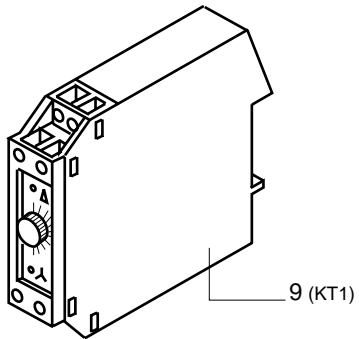
4 (KY1)



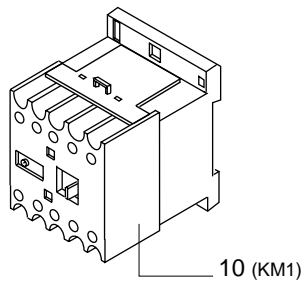
5 (KD1)



6 (KY1)
 7 (KY1 KD1) USA CND
 8 (KL1)



9 (KT1)



10 (KM1)



S 630

LEGENDA - (December '93, p.28,01,2004)

-
-

350-0905-0

N	P	C	CODICE	Q.TY	DENOMINAZIONE	DESCRIPTION	DESIGNATION	BEZEICHNUNG	DENOMINACION
---	---	---	--------	------	---------------	-------------	-------------	-------------	--------------

I VARI COMPONENTI ELETTRICI RAPPRESENTATI NEL CATALOGO PARTI DI RICAMBIO SONO CONTRADDISTINTI ANCHE DALLA DEFINIZIONE (Es.QM1) CHE TROVA CORRISPONDENZA NELLO SCHEMA ELETTRICO IN DOTAZIONE ALLA MACCHINA

THE ELECTRIC COMPONENTS IN THE SPARE PARTS CATALOGUE ARE IDENTIFIED (E.G:QM1) IN THE SAME WAY AS THE DIAGRAM SUPPLIED

LES PARTIES ELECTRIQUES DANS LE CATALOGUE PIECES DETACHEES SONT IDENTIFIEES (EX:QW1) DE LA MEME MANIERE COMME DANS LE SCHEMA ELECTRIQUE EN DOTATION AVEC LA MACHINE

DIE ELEKTROTEILE IN DEM ERSATZTEILKATALOG WERDEN WIE IM MITGELIEFERTEN SCHALTPLAN (Z.B:QM1) GEKENNZEICHNET

LOS COMPONENTES ELECTRICOS REPRESENTADOS EN EL CATALOGO PARTES DE REPUESTO SE DISTINGUE TAMBIEN CON LA DEFINICION (Es:QM1) QUE TIENE CORRISPONDENCIA EN EL ESQUEMA ELECTRICO ADJUNTO

QS	= Interruttore Generale Lucchettabile Padlockable main switch Interrupteur général verrouillable Abschliessbarer Hauptschalter Interruptor general con dispositivo bloqueo	FU1	= Fusibili di protezione al Primario Trasformatore Fuses (transformer primary Winding) Fusible bobinage primaire transformateur Sicherung (Primärwicklung) Fusibles protección transformador	KA1	= Relais ausiliario Auxiliary relay Relè auxiliaire Hilfsrelais Relais auxiliar	FS2	= Magnetotermico motore avanzamento Feed motor overload protection Protection termomagnétique moteur avance Schutzschalter (Vorschubmotor) Magnetotermico motor avance
Qm1	= Avvitatore OYD Motore Pialla OYD Starter planer motor Démarreur OYD moteur raboteuse Anlasser OYD (Messerwellenmotor) Encendido OYD motor cepillo	FU2	= Fusibili di protezione al secondario 0-110V. Fuses (transformer secondary winding 0-110V.) Fusible bobinage secondaire 0-110V. Sicherung (sekundärwicklung 0-110V.) Fusibles de protección al secundario 0-110V.	KY1	= Teleruttore di stella motore pialla Y remote switch (planer motor) Térupteur Y (moteur raboteuse) Y Fernschalter(Messerwellenmotor) Teleinterruptor estrella motor cepillo	FS3	= Magnetotermico di protezione primario trasformatore Thermomagnetic protection (primary transformer winding) Protection termomagnétique bobinage primaire transformateur Thermomagnetischer Schutz(Primärwicklung) Magnetotermico de protección primario transformador
SA2	= Invertitore di Marcia Motore C.C. per Sollevamento Reverser (DC lifting motor) Inverseur marche moteur CC montée Wendegetriebe (GS Hubmotor) Invertidor de marcha motor CC para elevación	FU3	= Fusibili di protezione all'Autotrasformatore Fuses (auto-transformer) Fusible protection auto - transformateur Sicherung (Spartransformator) Fusibles de protección al autotransformador	KD1	= Teleruttore di triangolo motore pialla D remote switch (planer motor) Térupteur D (moteur raboteuse) D Fernschalter (Messerwellenmotor) Teleinterruptor triangulo motor cepillo	ENC1	= Encoder sollevamento Encoder (table lifting) Encoder montée table Encoder (Tischhub) Encoder elevacion
QM3	= Interruttore per Avvitamento Affilatrice Interrupteur démarrage afuteuse Switch for grinder start Anlasser (Schafautomat) interruptor para encendido afiladora	HL/SB2	= Lampada Segnalazione Sovrassorbimento motore C.C. Pilot Lamp (DC motor overload) Lampe signalation surcharge moteur CC Kontrolllampe (GS Motorüberlast) Lampara senalación sobrecarga motor CC	KT1	= Timer per avviamento YD motore pialla Timer for YD start (planer motor) Temporisateur démarrage YD (moteur raboteuse) Zeitgeber YD Anlassen (Messerwellenmotor) Timer para encendido YD motor cepillo	SPV101	= Posizionatore "SEPRI" "SEPRI" positioner Dispositif de positionnement "SEPRI" Positioniereinrichtung"SEPRI" Posicionador "SEPRI"
FS1	= Magnetotermico Motore Pialla Thermomagnetic protection (planer motor) Protection thermomagnétique moteur raboteuse Thermomagnetischer Schutz (messerwellenmotor) Magnetotermico motor cepillo	HL1	= Lampada Sblocco freno Pilot Lamp (brake release) Lampe déblocage frien Kontrolllampe (Losen der bremse) Lampara desbloqueo freno	KL1	= Teleruttore di linea motore pialla Remote switch (planer motor) Térupteur (moteur raboteuse) Fernschalter (Messerwellenmotor) Teleinterruptor de linea motor cepillo	SV101	= Visualizzatore di quota (spostamento piana) Measure display (table motion) Visualisateur mesure (déplacement table) Massanzeige(Tischverstellung) Lectora de cota (desplazamiento mesa)
SE	= Emergenza Emergency button Boutoun d'urgence Notastaste Emergencia	SA1	= Selettore Sblocco freno Selector (brake release) selector déblocage frien Wahler (Losen der bremse) Selector desbloqueo freno	KM1	= Teleruttore di linea motore avanzamento Remote switch (feed motor) Térupteur (moteur avance) Fernschalter (Vorschubmotor) Teleinterruptor de linea motor avance		
TC	= Trasformatore Transformer Transformateur Transformator Transformador	SQ1	= Finecorsa portellone Limit switch Interrupteur fin de course Endschalter Fin de carrera porton	SA2	= Selettore per sollevamento manuale Selector for manual lifting Sélecteur montée manuelle Wahlschalter (manuelier Tischhub) Selector para elevacion manual		
TC1	= Autotrasformatore Auto-transformer Autotransformateur Spartransformator Autotransformador	CMR 02	= Scheda controllo motore C.C. per sollevamento Control card (DC lifting motor) Carte controle moteur CC montée Karte (GS Hubmotor) Tarjeta control motor CC para elevacion	SB3	= Pulsante di arresto motore pialla Button for planer motor stop Bouton arrete moteur raboteuse Drucktaster (messerwellenmotorstop) Pulsador detencion motor cepillo		
SB2	= Pulsante Avanzamento Impulsivo Sollevamento Button (impulsive lifting) Bouton montée a impulsions Druckknopf (impulsbetriebener Hub) Pulsador avance impulsivo elevacion	FU CMR	= Fusibile di protezione al secondario 0-36 V. Fuse (transformer secondary winding 0-36 V) Fusible protection secondaire 0-36 V Sicherung (sekundärwicklung 0-36 V) Fusibles de protección al secundario 0-36 V	SB4	= Pulsante di marcia motore pialla Button for planer motor start Bouton démarrage moteur raboteuse Drucktaster (messerwellenmotorstart) Pulsador marcia motor cepillo		

Tav 7

Cod.	Tav.	Pos.	Cod.	Tav.	Pos.	Cod.	Tav.	Pos.	Cod.	Tav.	Pos.	Cod.	Tav.	Pos.
0000101545H	350-0601-0	24	0000640538G	350-0501-0	14	0001314152D	350-0201-0	28	0001347475L	350-0903-0	22	0302110188C	350-0801-0	13
0000106511B	350-0601-0	17	0000642651H	350-0301-0	9	0001314159L	350-0201-0	41	0001347476B	350-0903-0	23	0302130203L	350-0201-0	11
0000106511B	350-0701-0	8	0000644033L	350-0401-0	13	0001314162E	350-0201-0	42	0001347590C	350-0904-0	4	0303010110H	350-0801-0	6
0000301854F	350-0501-0	2	0000644041F	350-0601-0	22	0001314187H	350-0201-0	30	0001347591E	350-0904-0	5	0303010300B	350-0201-0	6
0000305308C	350-0201-0	18	0000644043A	350-0501-0	23	0001314188A	350-0201-0	46	0001347623D	350-0902-0	2	0303010301D	350-0401-0	6
0000305310F	350-0201-0	21	0000644048B	350-0301-0	13	0001314189C	350-0201-0	47	0001347624F	350-0902-0	1	0306330203A	350-0701-0	4
0000310301D	350-0401-0	8	0000644068D	350-0202-0	2	0001314190D	350-0201-0	48	0001352428G	350-0902-0	27	0306330299D	350-0201-0	9
0000602178F	350-0301-0	20	0000644077C	350-0201-0	1	0001315115G	350-0201-0	31	0001354246C	350-0904-0	9	0306336600L	350-0701-0	7
0000602180L	350-0202-0	15	0000644260A	350-0302-0	4	0001315125H	350-0201-0	29	0001354749A	350-0904-0	6	0313758520E	350-0202-0	23
0000602480F	350-0501-0	26	0000644264L	350-0601-0	31	0001315128E	350-0201-0	43	0001354774C	350-0904-0	7	0315312300C	350-0201-0	24
0000602518H	350-0301-0	26	0000644268H	350-0202-0	12	0001315132C	350-0201-0	44	0001354799F	350-0904-0	8	0315334404A	350-0801-0	8
0000603351D	350-0201-0	19	0000644273H	350-0202-0	7	0001315135L	350-0201-0	45	0001354833H	350-0903-0	13	0315433001E	350-0202-0	34
0000603388C	350-0201-0	39	0000644278L	350-0202-0	4	0001315154L	350-0201-0	49	0001354839B	350-0903-0	11	0315438103G	350-0601-0	33
0000603422E	350-0601-0	13	0000644288A	350-0202-0	9	0001318054A	350-0301-0	24	0001354840C	350-0903-0	12	0315439000L	350-0601-0	15
0000603501C	350-0301-0	11	0000644513H	350-0101-0	9	0001318058L	350-0301-0	27	0001354942L	350-0903-0	14	0319025010H	350-0601-0	28
0000605078G	350-0201-0	8	0001301615B	350-0902-0	21	0001323079A	350-0301-0	25	0001354963D	350-0904-0	10	0319030007L	350-0601-0	30
0000605293C	350-0201-0	26	0001304092D	350-0903-0	20	0001323081D	350-0301-0	28	0001355503L	350-0904-0	2	0323884909F	350-0301-0	18
0000605293C	350-0701-0	6	0001304143C	350-0902-0	23	0001323083H	350-0301-0	29	0001501773H	350-0302-0	2	0324421500H	350-0401-0	17
0000606057D	350-0201-0	3	0001304144E	350-0902-0	22	0001331247G	350-0201-0	34	0001501774A	350-0302-0	8	0324422400G	350-0401-0	5
0000606107A	350-0601-0	20	0001304148D	350-0902-0	26	0001331248L	350-0201-0	57	0001505010D	350-0302-0	19	0324450100E	350-0601-0	7
0000606205H	350-0501-0	4	0001304231L	350-0902-0	24	0001331249B	350-0201-0	58	0001508846B	350-0302-0	17	0324450101G	350-0601-0	5
0000606236D	350-0401-0	14	0001304232B	350-0902-0	25	0001331250C	350-0201-0	59	0001902106L	350-0302-0	22	0324450102L	350-0601-0	4
0000606239A	350-0301-0	14	0001305050F	350-0903-0	10	0001331253L	350-0201-0	35	0001904160E	350-0302-0	16	0324450200G	350-0601-0	26
0000606256F	350-0501-0	24	0001307009C	350-0902-0	5	0001331254B	350-0201-0	60	0001904525A	350-0302-0	12	0324450300L	350-0601-0	19
0000606355F	350-0202-0	3	0001307020E	350-0904-0	1	0001331255D	350-0201-0	61	0001904930L	350-0302-0	13	0324450400B	350-0601-0	21
0000609235E	350-0601-0	3	0001307037B	350-0902-0	11	0001331267L	350-0201-0	32	0001904959B	350-0302-0	14	0324450500D	350-0601-0	16
0000612027H	350-0501-0	6	0001307055L	350-0902-0	6	0001331268B	350-0201-0	51	0001904963L	350-0302-0	15	0324450600F	350-0601-0	23
0000617747B	350-0202-0	5	0001307248L	350-0903-0	15	0001331269D	350-0201-0	52	0001905110A	350-0302-0	10	0324450800A	350-0601-0	27
0000617826L	350-0401-0	15	0001307515F	350-0903-0	5	0001331270E	350-0201-0	53	0001906004G	350-0302-0	21	0324450900C	350-0601-0	1
0000617835H	350-0201-0	2	0001307516H	350-0903-0	6	0001331273B	350-0201-0	33	0001907021D	350-0302-0	18	0324451300A	350-0601-0	18
0000617877G	350-0101-0	12	0001307715A	350-0902-0	3	0001331274D	350-0201-0	54	0001908005B	350-0302-0	20	0324451500E	350-0601-0	12
0000619171A	350-0601-0	29	0001307716C	350-0902-0	4	0001331275F	350-0201-0	55	0001908055G	350-0302-0	9	0324451600G	350-0601-0	11
0000628020B	350-0201-0	15	0001307810B	350-0903-0	1	0001331276H	350-0201-0	56	0002319524B	350-0701-0	10	0324451700L	350-0701-0	9
0000629091C	350-0501-0	9	0001307825D	350-0903-0	2	0001334198F	350-0201-0	50	0302110147F	350-0801-0	1	0324632600F	350-0202-0	17
0000633324D	350-0501-0	13	0001307838B	350-0903-0	21	0001339870G	350-0904-0	3	0302110149A	350-0801-0	5	0325210008B	350-0801-0	14
0000636018H	350-0301-0	10	0001307875L	350-0903-0	3	0001342322L	350-0902-0	16	0302110165D	350-0801-0	7	0325221009G	350-0501-0	20
0000636250L	350-0301-0	12	0001307885A	350-0903-0	4	0001342323B	350-0902-0	17	0302110170D	350-0801-0	2	0325810801A	350-0101-0	13
0000638740B	350-0301-0	22	0001307924D	350-0902-0	28	0001342325F	350-0902-0	13	0302110184D	350-0801-0	9	0325830400D	350-0201-0	20
0000640136D	350-0302-0	11	0001309164C	350-0902-0	9	0001342326H	350-0902-0	14	0302110185F	350-0801-0	10	0325830401F	350-0201-0	36
0000640182A	350-0501-0	19	0001309202D	350-0902-0	7	0001342327A	350-0902-0	15	0302110186H	350-0801-0	11	0325850103H	350-0601-0	32
0000640202D	350-0201-0	27	0001309203F	350-0902-0	8	0001347318G	350-0902-0	20	0302110187A	350-0801-0	12	0325850104A	350-0601-0	34

Cod.	Tav.	Pos.	Cod.	Tav.	Pos.	Cod.	Tav.	Pos.	Cod.	Tav.	Pos.	Cod.	Tav.	Pos.
0325850200D	350-0601-0	2	0335014100L	350-0101-0	14	0335040900L	350-0301-0	21	1035012900L	350-0101-0	5			
0325850300F	350-0601-0	6	0335015000H	350-0201-0	40	0335041000A	350-0301-0	7	1035012901B	350-0101-0	6			
0327010001H	350-0901-0	2	0335020100G	350-0401-0	10	0335041100C	350-0301-0	4	1035013200E	350-0101-0	17			
0327010005G	350-0901-0	3	0335020101L	350-0401-0	16	0335041200E	350-0301-0	6	1035021200E	350-0501-0	18			
0327020001A	350-0901-0	4	0335020200L	350-0401-0	9	0335042100D	350-0801-0	3	1035030100D	350-0201-0	100			
0327020002C	350-0901-0	5	0335021000F	350-0401-0	4	0525832300H	350-0201-0	5	1035031900C	350-0202-0	28			
0327021000L	350-0902-0	19	0335021100H	350-0301-0	15	0525850400C	350-0601-0	25	1035032020F	350-0201-0	101			
0327021003F	350-0902-0	12	0335021500G	350-0101-0	7	0534921500L	350-0401-0	12	1035034000F	350-0302-0	100			
0327021004H	350-0902-0	18	0335021600L	350-0501-0	21	0535011000H	350-0101-0	3	1035040700L	350-0301-0	17			
0327022000A	350-0901-0	6	0335021700B	350-0501-0	28	0535011105B	350-0101-0	16	1035050000F	350-0601-0	100			
0327030007F	350-0901-0	7	0335022100L	350-0401-0	7	0535011700D	350-0201-0	7	1035050001H	350-0601-0	101			
0327030020C	350-0901-0	8	0335030000G	350-0201-0	13	0535012000L	350-0201-0	23	1035050002A	350-0601-0	102			
0327030021E	350-0901-0	13	0335030100L	350-0201-0	4	0535013400L	350-0601-0	14	1035050003C	350-0601-0	103			
0327030164H	350-0901-0	9	0335030500H	350-0202-0	6	0535013500B	350-0101-0	11	1035050004E	350-0601-0	104			
0327050000E	350-0901-0	11	0335030600A	350-0202-0	11	0535022000B	350-0401-0	3	1035050005G	350-0601-0	105			
0327050001G	350-0901-0	12	0335031000H	350-0202-0	8	0535030700G	350-0202-0	1	1035090000E	350-0701-0	3			
0327055001C	350-0901-0	14	0335031100A	350-0202-0	22	0535030800L	350-0202-0	10	1035090001G	350-0701-0	2			
0334912000C	350-0101-0	10	0335031200C	350-0202-0	21	0535030900B	350-0202-0	14	1035090002L	350-0701-0	1			
0334920600F	350-0501-0	3	0335031400G	350-0202-0	16	0535031300L	350-0202-0	27	2719040200B	350-0903-0	16			
0334920700H	350-0501-0	5	0335031500L	350-0202-0	20	0535032000D	350-0201-0	12	2723843005H	350-0501-0	29			
0334920800A	350-0501-0	10	0335031600B	350-0202-0	26	0535033100G	350-0202-0	24	2734917101D	350-0401-0	1			
0334920900C	350-0501-0	8	0335031700D	350-0202-0	13	0535033300B	350-0202-0	33	2915401201F	350-0601-0	8			
0334921800B	350-0401-0	2	0335031800F	350-0202-0	25	0535034000F	350-0302-0	3	2925841101H	350-0201-0	10			
0334922000E	350-0501-0	11	0335032200D	350-0202-0	30	0535040100F	350-0301-0	23	2925865101G	350-0701-0	5			
0334922200L	350-0401-0	18	0335032300F	350-0202-0	29	0535041300B	350-0301-0	5	2935062101F	350-0401-0	100			
0334922501H	350-0401-0	11	0335032400H	350-0201-0	16	0715435501G	350-0601-0	9	2935066101A	350-0202-0	35			
0334923300C	350-0501-0	7	0335032500A	350-0201-0	14	0715435502L	350-0601-0	35	9622020314A	350-0501-0	31			
0334923700B	350-0501-0	15	0335032600C	350-0201-0	17	0715435503B	350-0601-0	36	9622039726G	350-0903-0	19			
0334923900F	350-0301-0	16	0335033000A	350-0201-0	37	0715435507A	350-0601-0	10	9622089554C	350-0501-0	32			
0334924000G	350-0501-0	17	0335033001C	350-0201-0	38	0715435508C	350-0601-0	37						
0334924200B	350-0501-0	22	0335033200E	350-0202-0	19	0715435509E	350-0601-0	38						
0334924300D	350-0501-0	12	0335033400L	350-0202-0	18	0715435510F	350-0601-0	39						
0334924400F	350-0501-0	25	0335033500B	350-0202-0	32	0735032020A	350-0201-0	25						
0334925000H	350-0501-0	1	0335033600D	350-0701-0	11	0735042000A	350-0301-0	1						
0334926000L	350-0801-0	4	0335034100D	350-0302-0	6	1034922000L	350-0501-0	100						
0334931800D	350-0202-0	31	0335034200F	350-0302-0	5	1034924100D	350-0501-0	16						
0334932500H	350-0202-0	36	0335034300H	350-0302-0	7	1035009000E	350-0501-0	30						
0334940400F	350-0301-0	2	0335034400A	350-0302-0	1	1035011800F	350-0101-0	4						
0335010500D	350-0101-0	8	0335040500A	350-0301-0	3	1035012500A	350-0101-0	15						
0335012100G	350-0201-0	22	0335040600C	350-0301-0	8	1035012600C	350-0101-0	1						
0335013000F	350-0501-0	27	0335040800G	350-0301-0	19	1035012601E	350-0101-0	2						



S 630

INDICE NUMERICO
 INUMERICAL CONTENTS - INDEX NUMERIQUE
 NUMERISCHER INHALT - INDICE NUMERICO

2

Codice/Code	Descrizione/Descr./Beschr./Denom.	Codice/Code	Descrizione/Descr./Beschr./Denom.
0000101545H	MOLA ABR. 110X20X51 09A70H05V92 MOLEBAB	0000644033L	ANELLO 32,0 UNI 7437 EL.DI SICUR FORO
0000106511B	STICK RAVVIVAMOLE 10X40 4C30S 5V11	0000644041F	ANELLO 40,0 UNI 7437 EL.DI SICUR FORO
0000301854F	GHIERA M45X1,5 AUTOFR. GUK	0000644043A	ANELLO 42,0 / UNI 7437 EL.DI SICUR X FORO
0000305308C	ROSETTA 10,5 X 40,0 X 6 BRUN	0000644048B	ANELLO 47,0 UNI 7437 EL.DI SICUR FORO
0000305310F	ROSETTA 10,5 X 40,0 X 6 UNI 6594 SVASATA BRUN	0000644068D	UNI 7437 ANELLO 68 ELAST.DI SICUREZ.PER FORI
0000310301D	VITE M10 X 16 10.9 UNI 5933 T SV.PIA.ES.I. BRUN.	0000644077C	ANELLO 80,0 UNI 7437 EL.DI SICUR FORO
0000602178F	CATENA 136 5/8X3/8 79P AN.CHIUSO GIUNTO MOLL.	0000644260A	ANELLO 12,0 UNI 7435 EL.DI SICUR ALB.
0000602180L	CATENA 90R 1/2X3/16 38P AN.CHIUSO GIUNTO MOLL.	0000644264L	ANELLO 16,0 UNI 7435 EL.DI SICUR ALB.
0000602480F	CATENA 90R 1/2X3/16 220P AN.CHIUSO GIUNTO MOL.	0000644268H	ANELLO 20,0 UNI 7435 EL.DI SICUR ALB.
0000602518H	CATENA 105 8X3 116P AN.CHIUSO GIUNTO MOLL.	0000644273H	ANELLO 25,0 UNI 7435 EL.DI SICUR ALB.
0000603351D	CINGHIA TRAP.3V 670 TERNA 9,5X8 SVIL.ETER.1700	0000644278L	ANELLO 30,0 UNI 7435 EL.DI SICUR ALB.
0000603388C	CINGHIA TRAP.3V 710 TERNA 9,5X8 SVIL.ETER.1805	0000644288A	UNI 7435 ANELLO 40 ELAST.DI SICUREZ.PER ALB.
0000603422E	CINGHIA TRAP 5M 530 POLIFLEX GATES	0000644513H	ANELLO 10,0 UNI 7434 EL.DI SICUR ALB.RS
0000603501C	CINGHIA TRAP.PER VARIAT. 28X8 SVIL.INTER. 650	0001301615B	BOBINA DI SGANCIO V 110/50 U110V50HZ-PKZM1
0000605078G	COLTELLI SCM TIPO 1 640X35X3 QUATERNA	0001304092D	FUSIBILE CIL.IN VETRO 5X20 10A
0000605293C	COLTELLI A GETTARE LEITZ HSS L=640 IN QUATERNA	0001304143C	FUSIBILE CILINDRICO 10X38 4A GM
0000606057D	CUSC.RAD.RIG.1C SFERE 40X80X18 6208 2RS	0001304144E	FUSIB.CILINDRICO 10,3X38 GM 2,000 AMP 500VAC
0000606107A	CUSC.RAD.RIG.1C SFERE 17X40X12 6203 2RS	0001304148D	FUSIB.CILINDRICO 10,3X38 GM 1,000 AMP 500VAC
0000606205H	CUSC.RAD.RIG.1C SFERE 45X75X16 6009 2RS	0001304231L	FUSIB.CILINDRICO 10,3X38 GG 2,000 AMP 500VAC
0000606236D	CUSC.RAD.RIG.1C SFERE 15X32X9 6002 2Z	0001304232B	FUSIB.CILINDRICO 10,3X38 GG 4,000 AMP 500VAC
0000606239A	CUSC.RAD.RIG.1C SFERE 25X47X12 6005 2Z	0001305050F	LAMPADA INCAND. E10 110V 3W
0000606256F	CUSC.RAD.RIG.1C SFERE 20X42X12 6004 2Z	0001307009C	INTERR. CAMME 2-03-11-OM BRT 3P 32A
0000606355F	CUSCINETTO RAD.RIG.SFERE 40X68X15 6008 2Z	0001307020E	INT.MAGN. FAZG2-CNA K&M 2A 1P
0000609235E	GUARNIZIONE X CUSC.A RULLINI G 35X42X4 INA	0001307037B	INTERRUTTORE TRIPOLARE 01 CM4064120 BRETER
0000612027H	CUSC.ASS.SFERE 45X65X14 51109	0001307055L	INTERRUT.TRIPOLARE 01 40A 30311+0M BRETER
0000617747B	MOLLA A TAZZA 46,5X30,5X0,6	0001307248L	PULSANTIERA XAL-J174 TEL FISSA D=22
0000617826L	MOLLA TAZZA 18 X 8,2 X 0,7 BRUN	0001307515F	ELEMENTO DI CONTATTO V50-P BRT
0000617835H	MOLLA TAZZA 79,5 X 55,5 X 0,8 BRUN	0001307516H	ELEMENTO DI CONTATTO V40-P BRT
0000617877G	MOLLA PNEUM.CORSA180-INT.445-500N -084549 STABILUS	0001307715A	INTERR. CAMME LE2-20-1753 BRT 3P 20A
0000619171A	IMPUGNATURA PIEGH M10 DADO BASSO 136-98 BOTEKO	0001307716C	INTERR.CAMME CM03-25R BRT 3P 25A
0000628020B	ELEMENTO DI BLOCCAG.TOLLOK TLK300 40X45 AN.INTERNO	0001307810B	PULS. R/N RM010 BRT D=22 COMPON TOND
0000629091C	FASCETTA PER CABLAGGIO 4,6 X 360	0001307825D	PULS. ROS RM065R BRT D=22 COMPON TOND
0000633324D	MR.BONF.MINI90W 24V 2800MCF+MWF30-FOC-1:60GR.63B14	0001307838B	PULS. LUM. RM122P BRT D=22 COMPON TOND
0000636018H	PULEG.ESPANS.MOTR. D=19 CV=../... R100B BERGES	0001307875L	SEL. NER RM304N BRT 2POS STAB TOND
0000636250L	PULEG.ESPANS.CONDOT.D=19 CV=1/6,5 F150B BERGES	0001307885A	SEL. NER RM383N BRT 3POS INST TOND
0000638740B	RIDUTTORE SITI I.60.B R=1:15 B3	0001307924D	FINECORSO FR-5151A PIZ NORM. COMPLETO
0000640136D	TUBO RILSAN 4X6 PA11 COLORE NERO	0001309164C	AVVIATORE TRIPOLARE OYD 32A 3CA 38226 BRETER
0000640182A	CAVO FLESSIB.PER INDICAT.NUM.VICTOR D=3,2X350	0001309202D	AVV.OYD CAMME CM38298-20R BRT 3P 20A
0000640202D	NYLON PA11 RILSAN TUBO 14X16 NEUTRO	0001309203F	AVV.OYD CAMME CM38298-25R BRT 3P 25A
0000640538G	TENDITORE M8 L= 110 - A DUE OCCHIELLI	0001314152D	MT 112 B3 P2 KW5,5 V220/380 50 MS
0000642651H	COMANDO CENTRALE CVK100 FORO D=19 C/PIGNONE	0001314159L	MOTORE TRIF 112 B3 P2 KW5,5 V380/660 50 MS

Codice/Code	Descrizione/Descr./Beschr./Denom.	Codice/Code	Descrizione/Descr./Beschr./Denom.
0001314162E	MOTORE TRIF 112 B3 P2 KW5,5 V415/720 50 MS	0001347590C	CONTATTI AUSILIARI 11DILM K&M
0001314187H	MOTORE TRIF 132 B3 P2 KW7,5 V220/380 50 MS	0001347591E	CONTATTI AUSILIARI 22DILM K&M
0001314188A	MOTORE TRIF 132 B3 P2 KW7,5 V380/660 50 MS	0001347623D	MANOPOLA LFS2-N-6-175 BRT GIALLO/ROSSA
0001314189C	MOTORE TRIF 132 B3 P2 KW7,5 V415/720 50 MS	0001347624F	MANOPOLA LFS2-G-6-175 BRT GRIGIO/NERA
0001314190D	MOTORE TRIF 132 B3 P2 KW7,5 V440/760 50 MS	0001352428G	BASE X FUSIBILE CIL. 01127 LEG 1P 10,3X38
0001315115G	MT 132 B3 P2 KW9 V600/1038 60 MS	0001352426C	TEMP. 0-30S 110VAC TZ25-F20-817-Y-D CDC
0001315125H	MOTORE TRIF 112 B3 P2 KW6,6 V760 60 MS 12M	0001354749A	CONTATTORE V110/50 V120/60 DIL0AM K&M
0001315128E	MT 112 B3 P2 KW6,6 V575/995 60 MS	0001354774C	CONTATTORE V110/50 V120/60 DIL 00A-M
0001315132C	MOTORE TRIF 112 B3 P2 KW6,6 V800 60 MS 12M	0001354799F	CONTATTORE V110/50 V120/60 DIL 00AM-10 K&M
0001315135L	MOTORE TRIF 112 B3 P2 KW6,6 V380/660 60 MS	0001354833H	TRAS.MON.400VA P230-460-600 S.O-110/0-36(2A/5A)CSA
0001315154L	MOTORE TRIF 132 B3 P2 KW9 V800 60 MS 12M	0001354839B	TRASF.MON.280VA P.200-...-440 S.O-110/0-36(0,9/5A)
0001318054A	MT 80 B3 P4 KW0,75 V220/380 50 MD	0001354840C	TR.M 400 VA 200/220/380/415/440
0001318058L	MT 80 B3 P4 KW0,75 V240/415 50 MD	0001354942L	AUT MON 150 VA 220/380/415/440 IEC989
0001323079A	MT 80 B3 P4 KW0,9 V220/380 60 MD	0001354963D	CONTATTORE MINIATURA DIL EM-10 V110/50 K&M
0001323081D	MT 80 B3 P4 KW0,9 V220/440 60 MD	0001355503L	ZOCCOLO X RELE'IND. PYF14A OMRON
0001323083H	MT 80 B3 P4 KW0,9 V230/460 60 MD	0001501773H	CILINDRO PNEUM.UNIVER X160-32-5S S/MOLLA-STELO RET
0001331247G	MOTORE FECC 132 B3 P2 KW7,5 V220/380 50 MS F220V	0001501774A	CILINDRO PNEUM.UNIVER XS40-44S-15-D.E.-CER.POST.MP
0001331248L	MOTORE FECC 132 B3 P2 KW7,5 V380/660 50 MS F220V	0001505010D	MANOMETRO 0-10 D=40 WWM FS40/0-10 UNIVER
0001331249B	MOTORE FECC 132 B3 P2 KW7,5 V415/720 50 MS F220V	0001508846B	REGOLATORE DI PRES.1/8 MR BIT-1/8-08 M.WORK
0001331250C	MTFECC 132 B3 P2 KW7,5 V440/760 50 MS F220V	0001902106L	RUBINETTO AUTOMATICO 1/8M 01 M.WORK
0001331253L	MOTORE FECC 132 B3 P2 KW9 V800 60 MS F220V 12M	0001904160E	RACC.RAP. DIR.M CIL C/GUARN. 1/8 E6 OT.
0001331254B	MOTORE FECC 132 B3 P2 KW9 V600/1038 60 MS F220V	0001904525A	RACC.RAP. "T" E6 OT.
0001331255D	MOTORE FECC 132 B3 P2 KW9 V220/380 60 MS F220V	0001904930L	PROLUNGA PER RACCORDI D=6 R7 M.WORK
0001331267L	MTFECC 112 B3 P2 KW5,5 V220/380 50 MS F220V	0001904959B	ASTA DOPPIA PER RAC.COMPONIBILE 1/8M R12 M.WORK
0001331268B	MOTORE FECC 112 B3 P2 KW5,5 V380/660 50 MS F220V	0001904963L	RACC.RAP. OR.ANELLO SEMP. 1/8 E6 OT.
0001331269D	MOTORE FECC 112 B3 P2 KW5,5 V415/720 50 MS F220V	0001905110A	RACCORDO D'ESTREM.A L IN OT.1/8M TUBO 6 R15-M.WORK
0001331270E	MTFECC 112 B3 P2 KW5,5 V440/760 50 MS F220V	0001906004G	RACC."L" MF CON. 1/8 OT.
0001331273B	MTFECC 112 B3 P2 KW6,6 V800 60 MS F220V 12M	0001907021D	MANICOTTO IN OT.A 2 FEMMINE 1/8X1/8 AERT.4402
0001331274D	MOTORE FECC 112 B3 P2 KW6,6 V600/1038 60 MS F220	0001908005B	RIDUZ.ES.BAS CIL 1/4 M 1/8 F OT.
0001331275F	MTFECC 112 B3 P2 KW6,6 V380/660 60 MS F220V	0001908055G	SILENZIATORE IN OTTONE 1/8M CL 2901
0001331276H	MOTORE FECC 112 B3 P2 KW6,6 V220/380 60 MS F220V	0002319524B	CHIAVE 68-70-75 UNI 6752 SET.NAS.QUADRO
0001334198F	MOTORE TRIF 132 B3 P2 KW9 V220/380 60 MS	0302110147F	TARGA MEDIA SIMBOLO TENSIONE TRIANG.
0001339870G	RELE'IND. 110,0 V AC MY4 OMRON	0302110149A	TARGA STEUERUNG -GERMANIA- 50X12,5 0,1
0001342322L	INT.MAGN. PKZM1-4 K&M 2,4-4A 3P	0302110165D	TARGA VELOCITA' MASSIMA -4500 G/MIN- 75X12,5 0,5
0001342323B	SALVAM.C.PROTEZ.MAGNET.4,0-6,0A PKZM1-6	0302110170D	TARGA POTENZA MAGGIORATA KW 7,5 50X12,5 0,1
0001342325F	INT.MAGN. PKZM1-16 K&M 10-16A 3P	0302110184D	TARGA DI AVVERTENZA -ITALIANO- 200X250 0,5
0001342326H	INT.MAGN. PKZM1-20 K&M 16-20A 3P	0302110185F	TARGA DI AVVERTENZA -FRANCESE-
0001342327A	SALVAM.C.PROTEZ.MAGNET.20,0-25,0A PKZM1-25 K&M SO	0302110186H	TARGA DI AVVERTENZA -TEDESCO-
0001347318G	CONTATTI AUX NHI20-PKZM1 K&M	0302110187A	TARGA AVVERTENZA -INGLESE-
0001347475L	BOTTONE P22814T BRT	0302110188C	TARGA AVVERTENZA -SPAGNOLO-
0001347476B	BOTTONE P22814R BRT	0302130203L	MOLLA EL.CIL COMPR 0,9=DF 9,5 =DE 30,0 =LL



S 630

DESCRIZIONE TECNICA
TECHNICAL DESCRIPTION - DESCRIPTION TECHNIQUE
TECHNISCHE BESCHREIBUNG - DESCRIPCION TECNICA

2

Codice/Code	Descrizione/Descr./Beschr./Denom.	Codice/Code	Descrizione/Descr./Beschr./Denom.
0303010110H	TARGA x GERMANIA 75X25 0,1	0327010001H	MOSTRINA PIALLA OYD 4500 FORO D=22,5 AB
0303010300B	POMOLO DIS.30103 SFERE 35X12MA	0327010005G	MOSTRINA AFFILACOLTELLI
0303010301D	POMELLO A SFERA M10X30	0327020001A	MOSTRINA
0306330203A	CHIAVE 10x13 UNI 6736 2 FORCH.SP.3,7 CR-V	0327020002C	MOSTRINA
0306330299D	VITE M8 X 13 T.ES.TF (TESTA H=6)LARD.STRIN	0327021000L	PROTEZIONE TRASPARENTE
0306336600L	SAGOMA POSIZIONAMENTO COLTELLI	0327021003F	PRIGIONIERO M5
0313758520E	MOLLA PER PRIGIONIERO	0327021004H	GUIDA DI SOSTEGNO
0315312300C	MORSETTO X MOTORE NYLON	0327022000A	MOSTRINA PER INTERRUTTORE GENERALE BRETER 72X
0315334404A	TARGA COLTELLI IN 4 LINGUE 100X25 0,1	0327030007F	MOSTRINA 0-1 MOTORE PIALLA
0315433001E	MOLLA EL.CIL COMPR 1,5=DF 21,0 =DE 40,0 =LL	0327030020C	MOSTRINA SBLOCCAGGIO FRENI
0315438103G	MOLLA EL.CIL COMPR 1=DF 22,0 =DE 55,0 =LL	0327030021E	MOSTRINA
0315439000L	POMELLO PICCOLO	0327030164H	MOSTRINA
0319025010H	VOLANTINO D=150	0327050000E	MOSTRINA CHIUSA
0319030007L	BOCCOLA CONICA	0327050001G	MOSTRINA FUSIBILI
0323884909F	MOLLA EL.CIL TRAZ 2=DF 15,0 =DE 79,0 =LL	0327055001C	MOSTRINA
0324421500H	INDICE	0334912000C	CUFFIA DI ASPIRAZIONE
0324422400G	BOCCOLA	0334920600F	PIGNONE DI SOLLEVAMENTO
0324450100E	CORPO AFFILATRICE	0334920700H	SUPPORTO CHIOCCIOLA
0324450101G	GREMBIULE	0334920800A	SOFFIETTO PER VITE
0324450102L	PERNETTO DI PRESAMOTO	0334920900C	CHIOCCIOLA DI SOLLEVAMENTO
0324450200G	CARTER AFFILATRICE	0334921800B	PIATTINO DI GUIDA PER PIANA
0324450300L	PULEGGIA CONDOTTA PORTAMOLA	0334922000E	VITE SOLLEVAMENTO PIANO
0324450400B	PERNO PER MOLA	0334922200L	ECCENTRICO DI FINE CORSA
0324450500D	DISTANZIALE PER CUSCINETTI	0334922501H	BIELLA MOVIMENTO RULLI
0324450600F	GHIERA SERRAGGIO MOLA	0334923300C	RONDELLA FISSAGGIO SOFFIETTI
0324450800A	SUPPORTO DESTRO AFFILATRICE	0334923700B	BIELLA PER MOTORE SOLLEVAMENTO
0324450900C	SUPPORTO SINISTRO AFFILATRICE	0334923900F	PERNO PER PIGNONE
0324451300A	SUPPORTO RAVVIVAMOLA	0334924000G	PERNO SOSTEGNO BIELLA
0324451500E	PULEGGIA MOTRICE	0334924200B	PIGNONE DI TRAINO
0324451600G	CAVO A SPIRALE X AFFILATRICE + MT2,85 (S52-S63B)	0334924300D	ALBERINO
0324451700L	DISTANZIALE PER REGOLAZIONE AFFILATURA	0334924400F	DISTANZIALE
0324632600F	MARTELLETTO ANTIRITORNO	0334925000H	BICCHIEROTTO DI PROTEZIONE VITE
0325210008B	TARGA MICRO SPORTELLO 100X75 0,1	0334926000L	TARGA SPOSTAMENTO VERTICALE RULLI 50X150 0,5
0325221009G	GIUNTO	0334931800D	VITE SPECIALE
0325810801A	ASTA ANTIRIBALTAMENTO	0334932500H	BOCCOLA ECCENTRICA
0325830400D	PULEGGIA MOTORE HP 10-15	0334940400F	FLANGIA PER ASTA CAMBIO
0325830401F	PULEGGIA MOTORE HP 7,5	0335010500D	PERNO FISSAGGIO SPORTELLO
0325850103H	PERNO BLOCCAGGIO ALBERO	0335012100G	PERNO FISSAGGIO BANDIERA
0325850104A	BARRETTA PER CATENACCIO	0335013000F	RIGHETTA
0325850200D	PERNO DI SCORRIMENTO	0335014100L	STAFFA PORTA MICRO
0325850300F	VITE COMANDO AFFILACOLTELLI	0335015000H	SPUGNA DI TAMPONAMENTO

Codice/Code	Descrizione/Descr./Beschr./Denom.	Codice/Code	Descrizione/Descr./Beschr./Denom.
0335020100G	PIANO SPESSORE A DUE RULLI	0335041100C	PERNO PER POMOLO
0335020101L	PIANO SPESSORE SENZA RULLI	0335041200E	PERNO PER PIGNONE
0335020200L	RULLO FOLLE SUL PIANO	0335042100D	TARGHETTA DI AVVERTENZA
0335021000F	GUIDA PIANA	0525832300H	COPPO SCARICO TRUCIOLI C/ASPIRAZIONE
0335021100H	PIGNONE PER RINVIO	0525850400C	BARRA D'APPOGGIO
0335021500G	ASTA GRADUATA	0534921500L	SUPPORTO RULLO DOPPIA REGISTR.
0335021600L	PERNO PER ENCODER	0535011000H	CARTER LATERALE
0335021700B	SUPPORTO ENCODER	0535011105B	LAMIERA DI COPERTURA SUPERIORE
0335022100L	LEVA MOVIMENTO RULLI	0535011700D	CONVOGLIATRUCCIOLI
0335030000G	SUPPORTO DESTRO	0535012000L	BANDIERA MOTORE
0335030100L	SUPPORTO SINISTRO	0535013400L	CARTER PER AFFILATRICE
0335030500H	BIELLA ANTERIORE	0535013500B	CARTER X PREDISP.AFFILATRICE
0335030600A	BIELLA POSTERIORE	0535022000B	ASTA COLLEGAMENTO BIELLA RULLI
0335031000H	MOLLA	0535030700G	PIGNONE PRIMO RULLO
0335031100A	BARRA ESAGONALE PER RULLO	0535030800L	PIGNONE SECONDO RULLO
0335031200C	PRESSATORE ANTERIORE	0535030900B	PIGNONE TERZO RULLO
0335031400G	PERNO PORTA MARTELLETTI	0535031300L	RULLO GOMMATO
0335031500L	PERNO PORTA PRESSATORE	0535032000D	ALBERO PIALLA
0335031600B	DISTANZIALE RULLO	0535033100G	RULLO RIGATO
0335031700D	PERNO PER BIELLA	0535033300B	RULLO LISCIO
0335031800F	BARRA FERMA PRESSATORI	0535034000F	SUPPORTO PISTONE ANTERIORE
0335032200D	BALESTRINA	0535040100F	SUPPORTO VARIATORE
0335032300F	VITE PRESSIONE BALESTRINA	0535041300B	INDICE LIMITATORE
0335032400H	PULEGGIA ALBERO PIALLA HZ 50	0715435501G	MT 63 B5S P2 KW0,25 V220/380 50
0335032500A	DISTANZIALE PER PULEGGIA	0715435502L	MT 63 B5S P2 KW0,25 V260/440 50
0335032600C	PULEGGIA ALBERO PIALLA HZ 60	0715435503B	MT 63 B5S P2 KW0,25 V240/415 50
0335033000A	PULEGGIA 60 HZ 7,5 HP	0715435507A	MT 63 B5S P2 KW0,25 V220/440 60
0335033001C	PULEGGIA 60 HZ 10-15 HP	0715435508C	MT 63 B5S P2 KW0,25 V330/575 60
0335033200E	DISTANZIALE PER PRESSATORE ANTERIORE	0715435509E	MT 63 B5S P2 KW0,25 V230/460 60
0335033400L	BARRA FERMO MARTELLETTI	0715435510F	MT 63 B5S P2 KW0,25 V220/380 60
0335033500B	LIMITATORE IN USCITA	0735032020A	ALBERO PIALLA A BLOCCAGGIO DINAMICO 'S630'
0335033600D	GRANO M12 X 135	0735042000A	POMOLO FIAMA IF70 CON RISPETTIVO QUADRANTE
0335034100D	PIASTRA PER PRESSATORI PNEUMATICI	1034922000L	KIT VITE DI SOLL.C/ CHIOCCIOLA, SUPPORTO E PIGNONE
0335034200F	PERNO PER PISTONE	1034924100D	KIT GALOPPINO TENDICATENA
0335034300H	PROLUNGA PISTONE	1035009000E	KIT SPINOTTO E CAVO
0335034400A	PROLUNGA PISTONE	1035011800F	LAMIERA COPRISUPPORTI
0335040500A	FLANGIA DI RITEGNO	1035012500A	CARTER SUPERIORE C/SPUGNA FONOASSORBENTE
0335040600C	PIGNONE COMANDO AVANZAMENTO	1035012600C	CARTER CON SCRITTE
0335040800G	PIGNONE VARIATORE	1035012601E	CARTER CON SCRITTE USA
0335040900L	PERNO PER RIDUTTORE	1035012900L	KIT GREMBIULI STD
0335041000A	PIASTRA PER LIMITATORE	1035012901B	KIT GREMBIULI FRANCIA



S 630

DESCRIZIONE TECNICA
 TECHNICAL DESCRIPTION - DESCRIPTION TECHNIQUE
 TECHNISCHE BESCHREIBUNG - DESCRIPCION TECNICA

4

Codice/Code	Descrizione/Descr./Beschr./Denom.	Codice/Code	Descrizione/Descr./Beschr./Denom.
1035013200E	CARTER SUP. C/SPUGNA PER MACC. C/AFFILATRICE		
1035021200E	KIT PIGNONE TENDICATENA		
1035030100D	ASS. ALBERO PIALLA STD		
1035031900C	KIT PRESSATORE POSTERIORE		
1035032020F	ALB.PIALLA A BLOCCAGGIO DINAMICO C/COLT. (S630)		
1035034000F	KIT REGOLAZIONE PNEUM. PRESS. RULLI DI TRAINO SUP.		
1035040700L	KIT PIGNONE TENDICATENA		
1035050000F	KIT APPL. AFFILATRICE V220/380/50		
1035050001H	KIT APPL. AFFILATRICE V240/415/50		
1035050002A	KIT APPL. AFFILATRICE V260/440/50		
1035050003C	KIT APPL. AFFILATRICE V230/460/60 USA CND		
1035050004E	KIT APPL. AFFILATRICE V330/600/60 USA CND		
1035050005G	KIT APPL. AFFILATRICE V220/440/60		
1035090000E	KIT PACCO ACCESSORI STD		
1035090001G	KIT PACCO ACCESSORI "TERSA"		
1035090002L	KIT PACCO ACCESSORI CON AFFILATRICE		
2719040200B	ASS.MORSETT.IN PLASTICA C/COPERCHIO CABLATA		
2723843005H	GR.ENCODER D=30 + SPINOTTO (50 IMPULSI)		
2734917101D	ASSIEME PRIGIONIERO CON DADO SPECIALE 'S 520'		
2915401201F	PERNO PATTINO PER AFFILATRICE		
2925841101H	A.LARDONE IN QUATERNA S63 B (03.258338.00F)		
2925865101G	GR. REGISTRACOLTELLI STD		
2935062101F	GR.PIANO SPESSORE CON 2 RULLI 'S 630'		
2935066101A	GR.RULLO SEZIONATO 'S 630'		
9622020314A	VISUALIZZ. DI QUOTA 110/50/60 1,5 KHZ SV101 SEPRI		
9622039726G	SCH.MOT.CC 12/24V10A CMR02 SEPRI		
9622089554C	POSIZIONATORE AD UN ASSE S/MEMORIE SPV102 SEPRI		